

For Research Use Only

# Phospho-MOBKL1B (Thr12) Polyclonal antibody, PBS Only

Catalog Number: 29027-1-PBS



## Basic Information

**Catalog Number:**

29027-1-PBS

**Size:**

100ug, Concentration: 1 mg/ml by Nanodrop;

**Source:**

Rabbit

**Isotype:**

IgG

**GenBank Accession Number:**

BC003398

**GeneID (NCBI):**

55233

**UNIPROT ID:**

Q9H859

**Full Name:**

MOB1, Mps One Binder kinase activator-like 1B (yeast)

**Calculated MW:**

216 aa, 25 kDa

**Observed MW:**

25 kDa

**Purification Method:**

Antigen affinity purification

## Applications

**Tested Applications:**

WB, IF/ICC, Indirect ELISA

**Species Specificity:**

human, rat

## Background Information

MOBKL1B, also known as MOB1B, belongs to the MOB1/phocein family. MOBKL1B binds to and regulate downstream targets such as the NDR-family protein kinases and LATS1 kinase. MOB1 protein is a key regulator of large tumor suppressor 1/2 (LATS1/2) kinases in the Hippo pathway. MOBKL1A and MOBKL1B are phosphorylated by MST1/MST2 kinases at Thr35 and Thr12, and MST1/MST2-catalyzed phosphorylation of MOBKL1A/MOBKL1B in intact cells is sufficient to substantially retard cell-cycle progression (PMID: 18328708).

## Storage

**Storage:**

Store at -80°C.

**Storage Buffer:**

PBS only, pH7.3

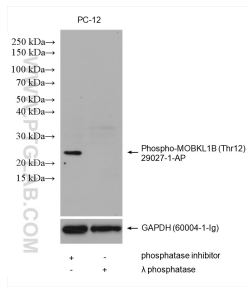
For technical support and original validation data for this product please contact:

T: 1 (888) 4PTGLAB (1-888-478-4522) (toll free in USA), or 1(312) 455-8498 (outside USA)

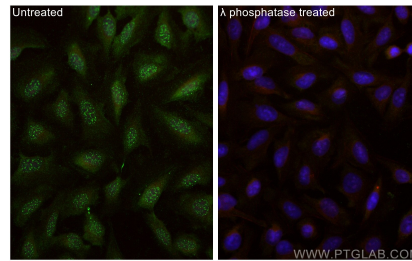
E: [proteintech@ptglab.com](mailto:proteintech@ptglab.com)  
W: [ptglab.com](http://ptglab.com)

**This product is exclusively available under Proteintech Group brand and is not available to purchase from any other manufacturer.**

## Selected Validation Data



Phosphatase inhibitor treated and  $\lambda$  phosphatase treated PC-12 cells were subjected to SDS PAGE followed by western blot with 29027-1-AP (Phospho-MOBKL1B (Thr12) antibody) at dilution of 1:800 incubated at room temperature for 1.5 hours. The membrane was stripped and re-blotted with GAPDH antibody as loading control. This data was developed using the same antibody clone with 29027-1-PBS in a different storage buffer formulation.



Immunofluorescent analysis of (-20°C Ethanol) fixed  $\lambda$  phosphatase treated U2OS cells using Phospho-MOBKL1B (Thr12) antibody (29027-1-AP) at dilution of 1:200 and CoraLite® 488-Conjugated Goat Anti-Rabbit IgG(H+L) (SA00013-2), CL594-Phalloidin (red). This data was developed using the same antibody clone with 29027-1-PBS in a different storage buffer formulation.