

For Research Use Only

CES1 Polyclonal antibody

Catalog Number: 29041-1-AP



Basic Information

Catalog Number: 29041-1-AP	GenBank Accession Number: BC012418	Purification Method: Antigen affinity purification
Size: 150ul , Concentration: 600 ug/ml by Nanodrop;	GeneID (NCBI): 1066	Recommended Dilutions: WB 1:1000-1:6000
Source: Rabbit	UNIPROT ID: P23141	IHC 1:50-1:500
Isotype: IgG	Full Name: carboxylesterase 1 (monocyte/macrophage serine esterase 1)	IF/ICC 1:200-1:800
Immunogen Catalog Number: AG30534	Calculated MW: 566 aa, 62 kDa	
	Observed MW: 62 kDa	

Applications

Tested Applications: WB, IHC, IF/ICC, ELISA	Positive Controls:
Species Specificity: Human, rat, mouse	WB: THP-1 cells, rat liver tissue, hepG2 cells, Caco-2 cells
Note-IHC: suggested antigen retrieval with TE buffer pH 9.0; (*) Alternatively, antigen retrieval may be performed with citrate buffer pH 6.0	IHC: mouse liver tissue,
	IF/ICC: C2C12 cells, HepG2 cells

Background Information

Human carboxylesterase 1 (hCE1 or CES1) is a serine esterase that hydrolyzes a variety of endogenous and exogenous substrates. CES1 contributes to approximately 90% of hepatic hydrolytic activity in human livers (PMID: 27895113). Variation in CES1 has the ability to affect the metabolism of methylphenidate (PMID: 28087982). CES1 has 567 amino acids and a theoretical molecular mass of 62 kDa.

Storage

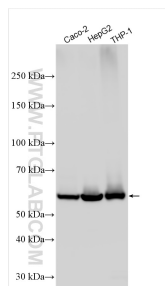
Storage:
Store at -20°C. Stable for one year after shipment.
Storage Buffer:
PBS with 0.02% sodium azide and 50% glycerol pH 7.3.
Aliquoting is unnecessary for -20°C storage

*** 20ul sizes contain 0.1% BSA

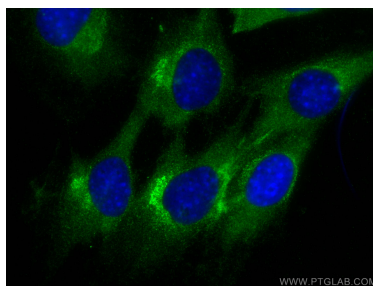
For technical support and original validation data for this product please contact:
T: 1 (888) 4PTGLAB (1-888-478-4522) (toll free in USA), or 1(312) 455-8498 (outside USA)
E: proteintech@ptglab.com
W: ptglab.com

This product is exclusively available under Proteintech Group brand and is not available to purchase from any other manufacturer.

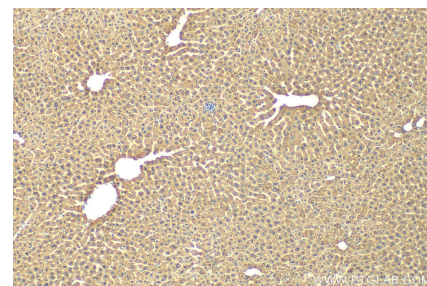
Selected Validation Data



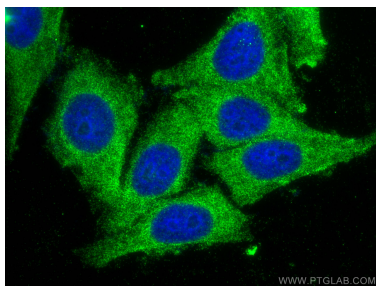
Various lysates were subjected to SDS PAGE followed by western blot with 29041-1-AP (CES1 antibody) at dilution of 1:3000 incubated at room temperature for 1.5 hours.



Immunofluorescent analysis of (-20°C Methanol) fixed C2C12 cells using CES1 antibody (29041-1-AP) at dilution of 1:400 and CoraLite®488-Conjugated Goat Anti-Rabbit IgG(H+L).



Immunohistochemical analysis of paraffin-embedded mouse liver tissue slide using 29041-1-AP (CES1 antibody) at dilution of 1:200 (under 10x lens). Heat mediated antigen retrieval with Tris-EDTA buffer (pH 9.0).



Immunofluorescent analysis of (-20°C Ethanol) fixed HepG2 cells using CES1 antibody (29041-1-AP) at dilution of 1:400 and CoraLite®488-Conjugated Goat Anti-Rabbit IgG(H+L).