

For Research Use Only

RIPK3 Polyclonal antibody

Catalog Number: 29080-1-AP



Basic Information

Catalog Number:

29080-1-AP

Size:

150ul, Concentration: 800 ug/ml by Nanodrop;

Source:

Rabbit

Isotype:

IgG

Immunogen Catalog Number:

AG30337

GenBank Accession Number:

BC062584

GeneID (NCBI):

11035

UNIPROT ID:

Q9Y572

Full Name:

receptor-interacting serine-threonine kinase 3

Calculated MW:

518 aa, 57 kDa

Observed MW:

57 kDa

Purification Method:

Antigen affinity purification

Recommended Dilutions:

WB 1:2000-1:10000

Applications

Tested Applications:

WB, ELISA

Species Specificity:

human

Positive Controls:

WB : THP-1 cells,

Background Information

RIPK3, also named as RIP3, a Ser/Thr kinase of RIP (Receptor Interacting Protein) family, is recruited to the TNFR1 signaling complex through RIP and has been shown to mediate apoptosis induction and NF- κ B activation. RIPK3 is a nucleocytoplasmic shuttling protein and its unconventional nuclear localization signal (NLS, 442-472 aa) is sufficient to trigger apoptosis in the nucleus (PMID:18533105). It has 3 isoforms produced by alternative splicing. RIPK3 might form a homodimer within cells, and its apoptotic activity may not be required for this dimerization (PMID:18533105).

Storage

Storage:

Store at -20°C. Stable for one year after shipment.

Storage Buffer:

PBS with 0.02% sodium azide and 50% glycerol pH 7.3.

Aliquoting is unnecessary for -20°C storage

*** 20ul sizes contain 0.1% BSA

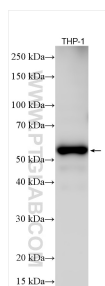
For technical support and original validation data for this product please contact:

T: 1 (888) 4PTGLAB (1-888-478-4522) (toll free in USA), or 1(312) 455-8498 (outside USA)

E: proteintech@ptglab.com
W: ptglab.com

This product is exclusively available under Proteintech Group brand and is not available to purchase from any other manufacturer.

Selected Validation Data



THP-1 cells were subjected to SDS PAGE followed by western blot with 29080-1-AP (RIP3 antibody) at dilution of 1:5000 incubated at room temperature for 1.5 hours.