

For Research Use Only

RPL5 Polyclonal antibody

Catalog Number: 29092-1-AP

4 Publications



Basic Information

Catalog Number: 29092-1-AP	GenBank Accession Number: BC109370	Purification Method: Antigen affinity purification
Size: 150ul , Concentration: 500 ug/ml by Nanodrop;	GeneID (NCBI): 6125	Recommended Dilutions: WB 1:500-1:1000
Source: Rabbit	UNIPROT ID: P46777	IHC 1:200-1:800
Isotype: IgG	Full Name: ribosomal protein L5	IF/ICC 1:50-1:500
Immunogen Catalog Number: AG30837	Observed MW: 34 kDa	

Applications

Tested Applications: WB, IHC, IF/ICC, ELISA	Positive Controls: WB : COS-7 cells, MOLT-4 cells, PC-3 cells
Cited Applications: WB, IHC	IHC : human prostate cancer tissue,
Species Specificity: human, monkey	IF/ICC : U-251 cells,
Cited Species: human	
Note-IHC: suggested antigen retrieval with TE buffer pH 9.0; (*) Alternatively, antigen retrieval may be performed with citrate buffer pH 6.0	

Background Information

The mammalian ribosome is a macromolecular assembly of 4 RNA species (rRNAs) and approximately 80 different proteins, including RPL5. RPL5 (ribosome protein L15) is required for rRNA maturation and formation of the 60S ribosomal subunits, and defects or mutation in RPL5 is the cause of DBA6.

Notable Publications

Author	Pubmed ID	Journal	Application
Koichi Ogami	36288708	Cell Rep	WB
Huahua Zhang	36384455	BMC Mol Cell Biol	WB
Tamami Miyagi	37332605	iScience	WB

Storage

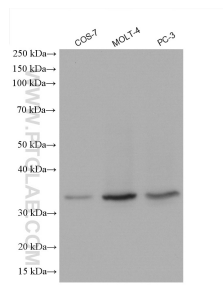
Storage:
Store at -20°C. Stable for one year after shipment.
Storage Buffer:
PBS with 0.02% sodium azide and 50% glycerol pH 7.3.
Aliquoting is unnecessary for -20°C storage

*** 20ul sizes contain 0.1% BSA

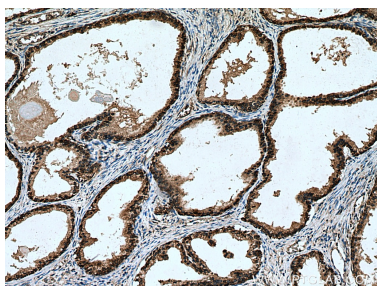
For technical support and original validation data for this product please contact:
T: 1 (888) 4PTGLAB (1-888-478-4522) (toll free in USA), or 1(312) 455-8498 (outside USA)
E: proteintech@ptglab.com
W: ptglab.com

This product is exclusively available under Proteintech Group brand and is not available to purchase from any other manufacturer.

Selected Validation Data



Various lysates were subjected to SDS PAGE followed by western blot with 29092-1-AP (RPL5 antibody) at dilution of 1:600 incubated at room temperature for 1.5 hours.



Immunohistochemical analysis of paraffin-embedded human prostate cancer tissue slide using 29092-1-AP (RPL5 antibody) at dilution of 1:400 (under 10x lens). Heat mediated antigen retrieval with Tris-EDTA buffer (pH 9.0).



Immunofluorescent analysis of (4% PFA) fixed U-251 cells using RPL5 antibody (29092-1-AP) at dilution of 1:200 and CoraLite®488-Conjugated Goat Anti-Rabbit IgG(H+L) (SA00013-2), CL594-phalloidin (red).