

For Research Use Only

RAB20 Polyclonal antibody

Catalog Number: 29110-1-AP



Basic Information

Catalog Number: 29110-1-AP	GenBank Accession Number: BC026025	Purification Method: Antigen affinity purification
Size: 150ul , Concentration: 1000 ug/ml by Nanodrop;	GeneID (NCBI): 55647	Recommended Dilutions: WB 1:500-1:2000 IHC 1:50-1:500
Source: Rabbit	UNIPROT ID: Q9NX57	
Isotype: IgG	Full Name: RAB20, member RAS oncogene family	
Immunogen Catalog Number: AG30459	Calculated MW: 26 kDa	
	Observed MW: 29 kDa	

Applications

Tested Applications: WB, IHC, ELISA	Positive Controls:
Species Specificity: Human	WB : HeLa cells, K-562 cells
Note-IHC: suggested antigen retrieval with TE buffer pH 9.0; (*) Alternatively, antigen retrieval may be performed with citrate buffer pH 6.0	IHC : human liver cancer tissue,

Background Information

RAB20 is a member of RAS oncogene family, it has no close relationship to any other members of RAB subfamily which consists of small GTP-binding proteins involved in the regulation of intracellular vesicular transport. Firstly found highly expressed on the apical side of kidney tubule epithelial cells, RAB20 was speculated to be involved in apical endocytosis and recycling processes. So far, its function is not well known, however, RAB20 is recently found higher expressed in pancreatic adenocarcinomas than normal pancreas, which is proved by WB and IHC analyses, suggesting its promising role in diagnosis of pancreatic carcinogenesis. Catalog#11616-1-AP is a rabbit polyclonal antibody raised against full-length of human RAB20.

Storage

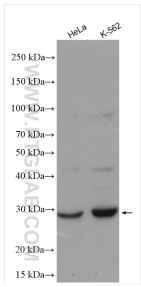
Storage:
Store at -20°C. Stable for one year after shipment.
Storage Buffer:
PBS with 0.02% sodium azide and 50% glycerol pH 7.3.
Aliquoting is unnecessary for -20°C storage

*** 20ul sizes contain 0.1% BSA

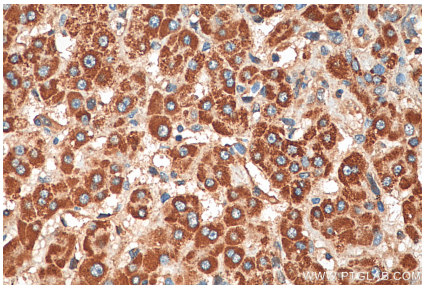
For technical support and original validation data for this product please contact:
T: 1 (888) 4PTGLAB (1-888-478-4522) (toll free in USA), or 1(312) 455-8498 (outside USA)
E: proteintech@ptglab.com
W: ptglab.com

This product is exclusively available under Proteintech Group brand and is not available to purchase from any other manufacturer.

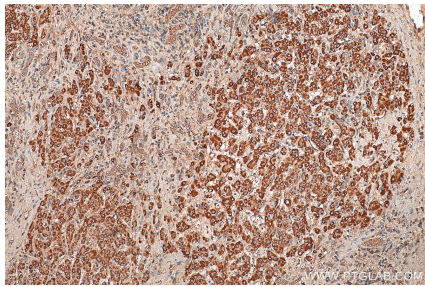
Selected Validation Data



Various lysates were subjected to SDS PAGE followed by western blot with 29110-1-AP (RAB20 antibody) at dilution of 1:1000 incubated at room temperature for 1.5 hours.



Immunohistochemical analysis of paraffin-embedded human liver cancer tissue slide using 29110-1-AP (RAB20 antibody) at dilution of 1:200 (under 40x lens). Heat mediated antigen retrieval with Tris-EDTA buffer (pH 9.0).



Immunohistochemical analysis of paraffin-embedded human liver cancer tissue slide using 29110-1-AP (RAB20 antibody) at dilution of 1:200 (under 10x lens). Heat mediated antigen retrieval with Tris-EDTA buffer (pH 9.0).