

For Research Use Only

PTH1R Polyclonal antibody

Catalog Number: 29115-1-AP



Basic Information

Catalog Number: 29115-1-AP	GenBank Accession Number: BC110388	Purification Method: Antigen affinity purification
Size: 150ul , Concentration: 700 µg/ml by Nanodrop;	GeneID (NCBI): 5745	Recommended Dilutions: WB 1:500-1:1000 IHC 1:50-1:500
Source: Rabbit	Full Name: parathyroid hormone 1 receptor	
Isotype: IgG	Calculated MW: 593 aa, 66 kDa	
Immunogen Catalog Number: AG30762	Observed MW: 70-80 kDa	

Applications

Tested Applications:
IHC, WB, ELISA

Species Specificity:
Human, Mouse, Rat

Note-IHC: suggested antigen retrieval with TE buffer pH 9.0; (*) Alternatively, antigen retrieval may be performed with citrate buffer pH 6.0

Positive Controls:

WB : HeLa cells, mouse kidney tissue, HepG2 cells, mouse liver tissue, rat kidney tissue, rat liver tissue

IHC : human pancreas cancer tissue, human kidney tissue

Background Information

PTH1R is a receptor for parathyroid hormone and parathyroid hormone-related peptide (PTHrP). PTH1R is a glycoprotein with seven transmembrane domains and it has an extracellular N-terminus region and an intracellular C-terminus region. The activity of PTH1R is mediated by G proteins which activate adenylyl cyclase. It has been reported that PTHrP and PTH1R are associated with the differentiation of bone and cartilage in the developing stages. PTH1R has several isoforms with 66/59 kDa and PTH1R can form a 120 kDa dimer in the non-reducing condition.

Storage

Storage:

Store at -20°C. Stable for one year after shipment.

Storage Buffer:

PBS with 0.02% sodium azide and 50% glycerol pH 7.3.

Aliquoting is unnecessary for -20°C storage

***** 20ul sizes contain 0.1% BSA**

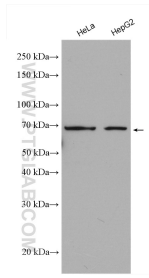
For technical support and original validation data for this product please contact:

T: 1 (888) 4PTGLAB (1-888-478-4522) (toll free in USA), or 1(312) 455-8498 (outside USA)

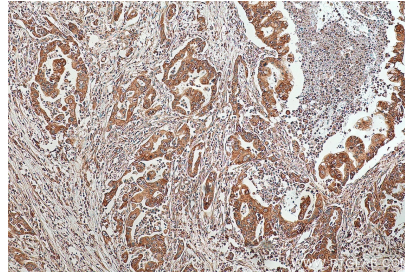
E: proteintech@ptglab.com
W: ptglab.com

This product is exclusively available under Proteintech Group brand and is not available to purchase from any other manufacturer.

Selected Validation Data



Various lysates were subjected to SDS PAGE followed by western blot with 29115-1-AP (PTH1R antibody) at dilution of 1:600 incubated at room temperature for 1.5 hours.



Immunohistochemical analysis of paraffin-embedded human pancreas cancer tissue slide using 29115-1-AP (PTH1R antibody) at dilution of 1:200 (under 10x lens). Heat mediated antigen retrieval with Tris-EDTA buffer (pH 9.0).