

For Research Use Only

PLEC Polyclonal antibody

Catalog Number: 29170-1-AP



Basic Information

Catalog Number: 29170-1-AP	GenBank Accession Number: NM_201380	Purification Method: Antigen affinity purification
Size: 150ul , Concentration: 900 ug/ml by Nanodrop;	GeneID (NCBI): 5339	Recommended Dilutions: WB 1:2000-1:16000
Source: Rabbit	UNIPROT ID: Q15149	IHC 1:1000-1:4000
Isotype: IgG	Full Name: plectin 1, intermediate filament binding protein 500kDa	IF/ICC 1:50-1:500
Immunogen Catalog Number: AG29418	Calculated MW: 532 kDa	
	Observed MW: 510 kDa	

Applications

Tested Applications: WB, IHC, IF/ICC, ELISA	Positive Controls:
Species Specificity: human, mouse	WB : HEK-293 cells, mouse brain tissue, mouse kidney tissue
Note-IHC: suggested antigen retrieval with TE buffer pH 9.0; (*) Alternatively, antigen retrieval may be performed with citrate buffer pH 6.0	IHC : mouse heart tissue,
	IF/ICC : A549 cells,

Background Information

Plectin is a large (≥ 500 -kDa) protein that is normally expressed in various tissues including skin, muscle, and brain. It binds to a number of cytoskeletal proteins including microtubules and intermediate filaments and is involved in establishment and dynamic modulation of the cytoskeletal network. In normal cells, it plays a crucial role in cytoskeleton network organization. In keratinocytes, plectin is concentrated at the basal surface, where it links intermediate filaments to the cytoplasmic domain of transmembrane glycoproteins such as integrin beta-4. (PMID: 24218614, PMID: 28281696, PMID: 23750011)

Storage

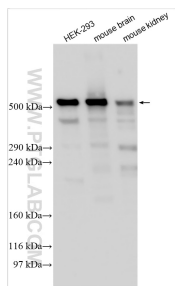
Storage:
Store at -20°C . Stable for one year after shipment.
Storage Buffer:
PBS with 0.02% sodium azide and 50% glycerol pH 7.3.
Aliquoting is unnecessary for -20°C storage

*** 20ul sizes contain 0.1% BSA

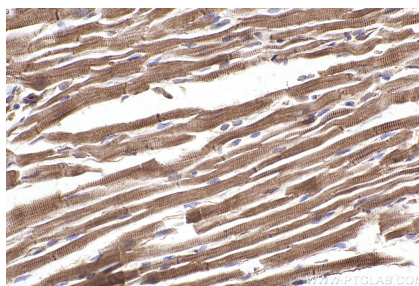
For technical support and original validation data for this product please contact:
T: 1 (888) 4PTGLAB (1-888-478-4522) (toll free in USA), or 1(312) 455-8498 (outside USA)
E: proteintech@ptglab.com
W: ptglab.com

This product is exclusively available under Proteintech Group brand and is not available to purchase from any other manufacturer.

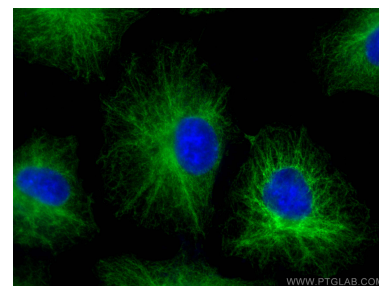
Selected Validation Data



Various lysates were subjected to SDS PAGE followed by western blot with 29170-1-AP (PLEC antibody) at dilution of 1:8000 incubated at room temperature for 1.5 hours.



Immunohistochemical analysis of paraffin-embedded mouse heart tissue slide using 29170-1-AP (PLEC antibody) at dilution of 1:2000 (under 40x lens). Heat mediated antigen retrieval with Tris-EDTA buffer (pH 9.0).



Immunofluorescent analysis of (-20°C Methanol) fixed A549 cells using PLEC antibody (29170-1-AP) at dilution of 1:200 and CoraLite®488-Conjugated AffiniPure Goat Anti-Rabbit IgG(H+L) (SA00013-2).