

For Research Use Only

PLEC Polyclonal antibody, PBS Only

Catalog Number: 29170-1-PBS



Basic Information

Catalog Number:

29170-1-PBS

Size:

100ug, Concentration: 1 mg/ml by Nanodrop;

Source:

Rabbit

Isotype:

IgG

Immunogen Catalog Number:

AG29418

GenBank Accession Number:

NM_201380

GeneID (NCBI):

5339

UNIPROT ID:

Q15149

Full Name:

plectin 1, intermediate filament binding protein 500kDa

Calculated MW:

532 kDa

Observed MW:

510 kDa

Purification Method:

Antigen affinity purification

Applications

Tested Applications:

WB, IHC, IF/ICC, Indirect ELISA

Species Specificity:

human, mouse

Background Information

Plectin is a large (≥ 500 -kDa) protein that is normally expressed in various tissues including skin, muscle, and brain. It binds to a number of cytoskeletal proteins including microtubules and intermediate filaments and is involved in establishment and dynamic modulation of the cytoskeletal network. In normal cells, it plays a crucial role in cytoskeleton network organization. In keratinocytes, plectin is concentrated at the basal surface, where it links intermediate filaments to the cytoplasmic domain of transmembrane glycoproteins such as integrin beta-4. (PMID: 24218614, PMID: 28281696, PMID: 23750011)

Storage

Storage:

Store at -80°C .

Storage Buffer:

PBS only, pH7.3

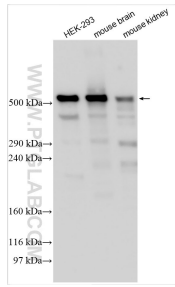
For technical support and original validation data for this product please contact:

T: 1 (888) 4PTGLAB (1-888-478-4522) (toll free in USA), or 1(312) 455-8498 (outside USA)

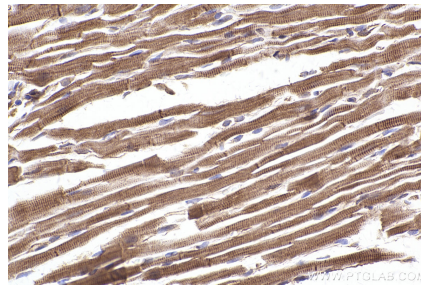
E: proteintech@ptglab.com
W: ptglab.com

This product is exclusively available under Proteintech Group brand and is not available to purchase from any other manufacturer.

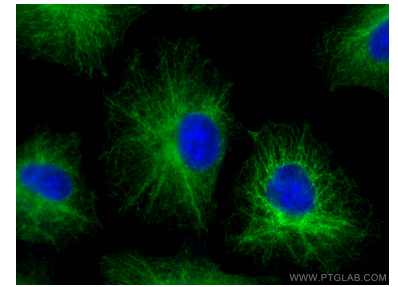
Selected Validation Data



Various lysates were subjected to Tris-Acetate gel system followed by western blot with 29170-1-AP (PLEC antibody) at dilution of 1:8000 incubated at room temperature for 1.5 hours. This data was developed using the same antibody clone with 29170-1-PBS in a different storage buffer formulation.



Immunohistochemical analysis of paraffin-embedded mouse heart tissue slide using 29170-1-AP (PLEC antibody) at dilution of 1:2000 (under 40x lens). Heat mediated antigen retrieval with Tris-EDTA buffer (pH 9.0). This data was developed using the same antibody clone with 29170-1-PBS in a different storage buffer formulation.



Immunofluorescent analysis of (-20°C Methanol) fixed A549 cells using PLEC antibody (29170-1-AP) at dilution of 1:200 and CoraLite®488-Conjugated AffiniPure Goat Anti-Rabbit IgG(H+L) (SA00013-2). This data was developed using the same antibody clone with 29170-1-PBS in a different storage buffer formulation.