

For Research Use Only

Di-Methyl-Histone H3 (Lys36) Polyclonal antibody

Catalog Number: 29202-1-AP

1 Publications



Basic Information

Catalog Number:

29202-1-AP

Size:

100ul , Concentration: 300 ug/ml by Nanodrop;

Source:

Rabbit

Isotype:

IgG

GenBank Accession Number:

BC066245

GeneID (NCBI):

8350

UNIPROT ID:

P68431

Full Name:

histone cluster 1, H3a

Observed MW:

15-18 kDa

Purification Method:

Antigen affinity purification

Recommended Dilutions:

WB 1:1000-1:8000

ELISA 1:32000-1:128000

Applications

Tested Applications:

WB, ELISA

Cited Applications:

WB

Species Specificity:

human, mouse, rat

Cited Species:

human

Positive Controls:

WB : C2C12 cells, HEK-293T cells, THP-1 cells, HeLa cells, HepG2 cells, HSC-T6 cells

ELISA : peptide,

Background Information

Histones, including H1/H5 (linker histones), H2, H3, and H4 (core histones), are nucleic proteins which interact with DNA to form the nucleosomes and play important roles in gene regulation and DNA replication. Histone proteins are highly post-translationally modified while Histone H3 is the most extensively modified. The NSD family histone methyltransferases, including NSD1, NSD2 and NSD3, play crucial roles in chromatin regulation and are implicated in oncogenesis (PMID: 33361816). NSD enzymes exhibit an auto-inhibitory state that is relieved by nucleosome engagement, allowing for H3K36 di-methylation catalysis (PMID: 22099308).

Notable Publications

Author	Pubmed ID	Journal	Application
Guanghui He	38996954	Cell Signal	WB

Storage

Storage:

Store at -20°C. Stable for one year after shipment.

Storage Buffer:

PBS with 0.02% sodium azide and 50% glycerol pH 7.3.

Aliquoting is unnecessary for -20°C storage

*** 20ul sizes contain 0.1% BSA

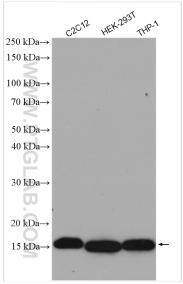
For technical support and original validation data for this product please contact:

T: 1 (888) 4PTGLAB (1-888-478-4522) (toll free in USA), or 1(312) 455-8498 (outside USA)

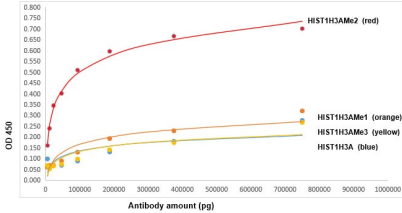
E: proteintech@ptglab.com
W: ptglab.com

This product is exclusively available under Proteintech Group brand and is not available to purchase from any other manufacturer.

Selected Validation Data



Various lysates were subjected to SDS PAGE followed by western blot with 29202-1-AP (Di-Methyl-Histone H3 (Lys36) antibody) at dilution of 1:4000 incubated at room temperature for 1.5 hours.



Di-Methyl-Histone H3(Lys36) antibody (29202-1-AP) tested by ELISA. HIST1H3A(31-43aa), HIST1H3AME1(31-43aa), HIST1H3AME2(31-43aa), HIST1H3AME3(31-43aa) were coated onto microtiter plates at 0.15 µg/well and then incubated with a dilution series of HIST1H3AME2 antibody (29202-1-AP). Bound antibodies were detected with HRP conjugated anti-rabbit IgG followed by incubation with HRP substrate and then measuring the resulting absorbance.