

For Research Use Only

PPP2R2B/A/C/D Polyclonal antibody

Catalog Number: 29237-1-AP

1 Publications



Basic Information

Catalog Number:

29237-1-AP

Size:

150ul, Concentration: 600 ug/ml by Nanodrop;

Source:

Rabbit

Isotype:

IgG

Immunogen Catalog Number:

AG30757

GenBank Accession Number:

BC031790

GeneID (NCBI):

5521

UNIPROT ID:

Q00005

Full Name:

protein phosphatase 2 (formerly 2A), regulatory subunit B, beta isoform

Calculated MW:

443 aa, 52 kDa

Observed MW:

52 kDa

Purification Method:

Antigen affinity purification

Recommended Dilutions:

WB 1:1000-1:6000

IHC 1:400-1:800

Applications

Tested Applications:

WB, IHC, ELISA

Cited Applications:

WB

Species Specificity:

Human, Mouse, Rat

Cited Species:

mouse

Positive Controls:

WB : HepG2 cells, MCF-7 cells, mouse brain tissue, rat brain tissue

IHC : mouse brain tissue,

Note-IHC: suggested antigen retrieval with TE buffer pH 9.0; (*) Alternatively, antigen retrieval may be performed with citrate buffer pH 6.0

Background Information

The PPP2R2B gene encodes a deduced 443 amino acid protein of approximately 52 kDa, which is a brain-specific regulatory subunit B of protein phosphatase 2. PPP2R2B is a Subunit of PP2A, a highly conserved constitutive enzyme(PMID:11719278). PPP2R2B (B β) is an important regulator of protein phosphatase 2A (PP2A) activity in the brain. Through differential promoter usage and alternative splicing, two major isoforms B β 1 and B β 2 with divergent sub-cellular targeting N termini are produced. B β plays an important role in neuronal survival. It has 5 isoforms produced by alternative splicing. The antibody cross-reacts with PPP2R2A, PPP2R2C, and PPP2R2D due to high immunogen homology between PPP2R2B and PPP2R2A, PPP2R2C, and PPP2R2D.

Notable Publications

Author	Pubmed ID	Journal	Application
G F Sengül	37926156	Biochim Biophys Acta Mol Cell Res	WB

Storage

Storage:

Store at -20°C. Stable for one year after shipment.

Storage Buffer:

PBS with 0.02% sodium azide and 50% glycerol pH 7.3.

Aliquoting is unnecessary for -20°C storage

*** 20ul sizes contain 0.1% BSA

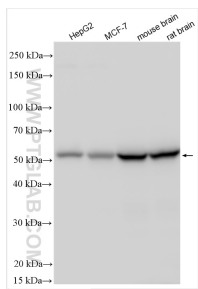
For technical support and original validation data for this product please contact:

T: 1 (888) 4PTGLAB (1-888-478-4522) (toll free in USA), or 1(312) 455-8498 (outside USA)

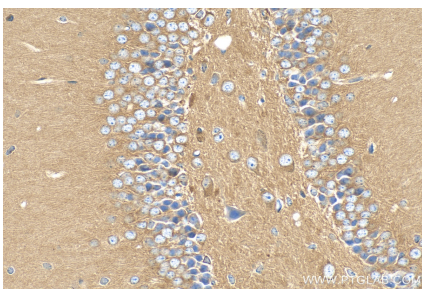
E: proteintech@ptglab.com
W: ptglab.com

This product is exclusively available under Proteintech Group brand and is not available to purchase from any other manufacturer.

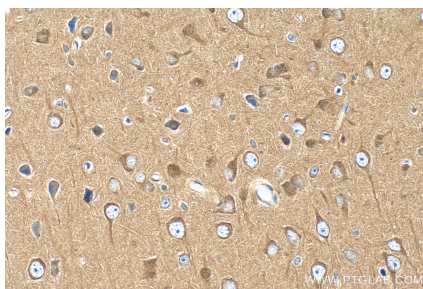
Selected Validation Data



Various lysates were subjected to SDS PAGE followed by western blot with 29237-1-AP (PPP2R2B/A/C/D antibody) at dilution of 1:3000 incubated at room temperature for 1.5 hours.



Immunohistochemical analysis of paraffin-embedded mouse brain tissue slide using 29237-1-AP (PPP2R2B/A/C/D antibody) at dilution of 1:400 (under 40x lens). Heat mediated antigen retrieval with Tris-EDTA buffer (pH 9.0).



Immunohistochemical analysis of paraffin-embedded mouse brain tissue slide using 29237-1-AP (PPP2R2B/A/C/D antibody) at dilution of 1:400 (under 40x lens). Heat mediated antigen retrieval with Tris-EDTA buffer (pH 9.0).