

For Research Use Only

MAP3K2 Polyclonal antibody

Catalog Number: 29265-1-AP **1 Publications**



Basic Information

Catalog Number: 29265-1-AP	GenBank Accession Number: NM_006609	Purification Method: Antigen affinity purification
Size: 150ul, Concentration: 500 µg/ml by Nanodrop;	GeneID (NCBI): 10746	Recommended Dilutions: WB 1:500-1:2000 IHC 1:50-1:500
Source: Rabbit	Full Name: mitogen-activated protein kinase kinase kinase 2	
Isotype: IgG	Calculated MW: 70 kDa	
Immunogen Catalog Number: AG30886	Observed MW: 70 kDa	

Applications

Tested Applications: IHC, WB, ELISA	Positive Controls:
Cited Applications: WB	WB: HeLa cells, K-562 cells, MCF-7 cells
Species Specificity: Human	IHC: human breast cancer tissue,
Cited Species: human	

Note-IHC: suggested antigen retrieval with TE buffer pH 9.0; (*) Alternatively, antigen retrieval may be performed with citrate buffer pH 6.0

Background Information

MAP3K2, also named as MEK12 and MEK12B, belongs to the protein kinase superfamily, STE Ser/Thr protein kinase family and MAPK kinase kinase subfamily. It is a component of a protein kinase signal transduction cascade. MAP3K2 mediates activation of the NF-kappa-B, AP1 and DDIT3 transcriptional regulators. The antibody is specific to MAP3K2.

Notable Publications

Author	Pubmed ID	Journal	Application
Chang Liu	34258104	Mol Ther Nucleic Acids	WB

Storage

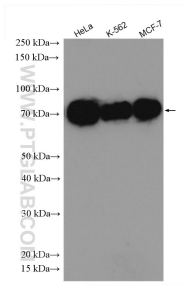
Storage:
Store at -20°C.
Storage Buffer:
PBS with 0.02% sodium azide and 50% glycerol pH 7.3.
Aliquoting is unnecessary for -20°C storage

***** 20ul sizes contain 0.1% BSA**

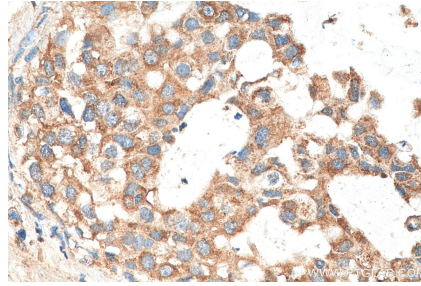
For technical support and original validation data for this product please contact:
T: 1 (888) 4PTGLAB (1-888-478-4522) (toll free in USA), or 1(312) 455-8498 (outside USA)
E: proteintech@ptglab.com
W: ptglab.com

This product is exclusively available under Proteintech Group brand and is not available to purchase from any other manufacturer.

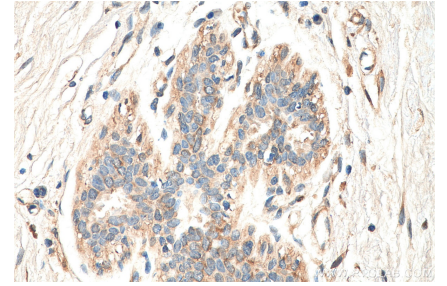
Selected Validation Data



Various lysates were subjected to SDS PAGE followed by western blot with 29265-1-AP (MAP3K2 antibody) at dilution of 1:1000 incubated at room temperature for 1.5 hours.



Immunohistochemical analysis of paraffin-embedded human breast cancer tissue slide using 29265-1-AP (MAP3K2 antibody) at dilution of 1:200 (under 40x lens). Heat mediated antigen retrieval with Tris-EDTA buffer (pH 9.0).



Immunohistochemical analysis of paraffin-embedded human breast cancer tissue slide using 29265-1-AP (MAP3K2 antibody) at dilution of 1:200 (under 40x lens). Heat mediated antigen retrieval with Tris-EDTA buffer (pH 9.0).