

For Research Use Only

KMT2A/MLL1 Polyclonal antibody, PBS Only

Catalog Number: 29278-1-PBS



Basic Information

Catalog Number:

29278-1-PBS

Size:

100ug, Concentration: 1 mg/ml by Nanodrop;

Source:

Rabbit

Isotype:

IgG

Immunogen Catalog Number:

AG30468

GenBank Accession Number:

NM_001197104

GeneID (NCBI):

4297

UNIPROT ID:

Q03164

Full Name:

myeloid/Lymphoid or mixed-Lineage leukemia (trithorax homolog, Drosophila)

Calculated MW:

432 kDa

Observed MW:

180 kDa

Purification Method:

Antigen affinity purification

Applications

Tested Applications:

WB, Indirect ELISA

Species Specificity:

human

Background Information

KMT2A, also known as mixed-lineage leukemia (MLL), is a gene that encodes a lysine methyltransferase responsible for the transcriptional activation through lysine 4 of histone 3 (H3K4) methylation. KMT2A is expressed mainly in the nucleus and is ubiquitously present in various tissues, particularly in ovary, lymph node, endometrium, thyroid, and brain tissue. It plays a significant role in embryonic development, hematopoiesis, and neurodevelopment. Mutations in KMT2A have been associated with several pathological conditions.

Storage

Storage:

Store at -80°C.

Storage Buffer:

PBS only, pH7.3

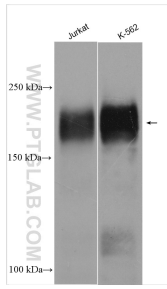
For technical support and original validation data for this product please contact:

T: 1 (888) 4PTGLAB (1-888-478-4522) (toll free in USA), or 1(312) 455-8498 (outside USA)

E: proteintech@ptglab.com
W: ptglab.com

This product is exclusively available under Proteintech Group brand and is not available to purchase from any other manufacturer.

Selected Validation Data



Various lysates were subjected to SDS PAGE followed by western blot with 29278-1-AP (MLL antibody) at dilution of 1:2000 incubated at room temperature for 1.5 hours. This data was developed using the same antibody clone with 29278-1-PBS in a different storage buffer formulation.