

For Research Use Only

# IFI16 Polyclonal antibody

Catalog Number: 29280-1-AP



## Basic Information

<b>Catalog Number:</b> 29280-1-AP	<b>GenBank Accession Number:</b> BC017059	<b>Purification Method:</b> Antigen affinity purification
<b>Size:</b> 150ul , Concentration: 650 µg/ml by Nanodrop;	<b>GeneID (NCBI):</b> 3428	<b>Recommended Dilutions:</b> WB 1:5000-1:50000 IHC 1:50-1:500
<b>Source:</b> Rabbit	<b>Full Name:</b> interferon, gamma-inducible protein 16	
<b>Isotype:</b> IgG	<b>Calculated MW:</b> 729 aa, 82 kDa	
<b>Immunogen Catalog Number:</b> AG30297	<b>Observed MW:</b> 85-95 kDa	

## Applications

### Tested Applications:

IHC, WB, ELISA

### Species Specificity:

Human

**Note-IHC: suggested antigen retrieval with TE buffer pH 9.0; (\*) Alternatively, antigen retrieval may be performed with citrate buffer pH 6.0**

### Positive Controls:

**WB** : Daudi cells, Jurkat cells, MOLT-4 cells, Ramos cells

**IHC** : human renal cell carcinoma tissue,

## Background Information

IFI16 is a member of a family of interferon-inducible nuclear proteins involved in transcriptional regulation functions as a transcriptional repressor. IFI16 may be involved in TP53-mediated transcriptional activation by enhancing TP53 sequence-specific DNA binding and modulating TP53 phosphorylation status. It has been reported that IFI16 participates in the regulation of autophagy, TP53-mediated cell death and innate immune response. IFI16 has different isoforms and 67790-1-Ig antibody detects proteins around 85-95 kDa in SDS-PAGE similar to papers. (PMID: 9718316, 14990579, 11146555, 22046441)

## Storage

### Storage:

Store at -20°C. Stable for one year after shipment.

### Storage Buffer:

PBS with 0.02% sodium azide and 50% glycerol pH 7.3.

Aliquoting is unnecessary for -20°C storage

\*\*\* 20ul sizes contain 0.1% BSA

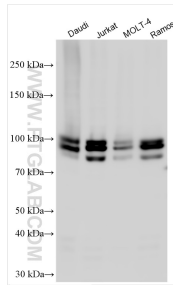
For technical support and original validation data for this product please contact:

T: 1 (888) 4PTGLAB (1-888-478-4522) (toll free in USA), or 1(312) 455-8498 (outside USA)

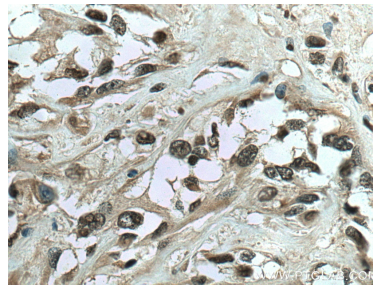
E: proteintech@ptglab.com  
W: ptglab.com

This product is exclusively available under Proteintech Group brand and is not available to purchase from any other manufacturer.

## Selected Validation Data



Various lysates were subjected to SDS PAGE followed by western blot with 29280-1-AP (IF116 antibody) at dilution of 1:10000 incubated at room temperature for 1.5 hours.



Immunohistochemical analysis of paraffin-embedded human renal cell carcinoma tissue slide using 29280-1-AP (IF116 antibody) at dilution of 1:200 (under 40x lens). Heat mediated antigen retrieval with Tris-EDTA buffer (pH 9.0).