

For Research Use Only

BRWD1 Polyclonal antibody

Catalog Number: 29293-1-AP



Basic Information

Catalog Number: 29293-1-AP	GenBank Accession Number: BC064602	Purification Method: Antigen affinity purification
Size: 150ul , Concentration: 600 ug/ml by Nanodrop;	GeneID (NCBI): 54014	Recommended Dilutions: WB 1:500-1:1000 IHC 1:50-1:500
Source: Rabbit	UNIPROT ID: Q9NSI6	
Isotype: IgG	Full Name: bromodomain and WD repeat domain containing 1	
Immunogen Catalog Number: AG30902	Calculated MW: 2320 aa, 263 kDa	
	Observed MW: 263 kDa	

Applications

Tested Applications: WB, IHC, ELISA	Positive Controls:
Species Specificity: human, mouse	WB : HepG2 cells, MCF-7 cells, NIH/3T3 cells
Note-IHC: suggested antigen retrieval with TE buffer pH 9.0; (*) Alternatively, antigen retrieval may be performed with citrate buffer pH 6.0	IHC : mouse cerebellum tissue,

Background Information

BRWD1 (Bromodomain and WD repeat domain containing 1, also known as WDR9) has a predicted molecular weight of 263 kDa and contains tandem BROMO domains and WD40 repeats (PMID:12889071). One of the remarkable functions of BRWD1 was the coordinated repression of MYC and MYC target genes. At the Myc/MYC locus, in both mice and humans, BRWD1 specifically repressed distal enhancers, which are associated with lineage specific expression (PMID:30250168). In addition, BRWD1 as a key epigenomic mediator of normal neurodevelopment and an important contributor to DS (Down syndrome)-related phenotypes (PMID:36289231).

Storage

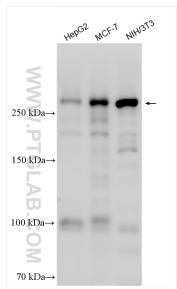
Storage:
Store at -20°C. Stable for one year after shipment.
Storage Buffer:
PBS with 0.02% sodium azide and 50% glycerol pH 7.3.
Aliquoting is unnecessary for -20°C storage

*** 20ul sizes contain 0.1% BSA

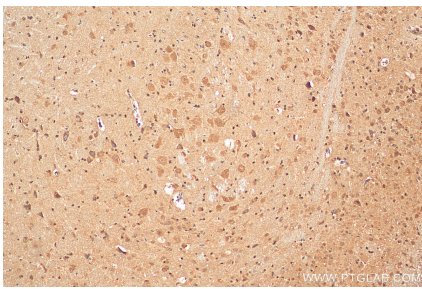
For technical support and original validation data for this product please contact:
T: 1 (888) 4PTGLAB (1-888-478-4522) (toll free in USA), or 1(312) 455-8498 (outside USA)
E: proteintech@ptglab.com
W: ptglab.com

This product is exclusively available under Proteintech Group brand and is not available to purchase from any other manufacturer.

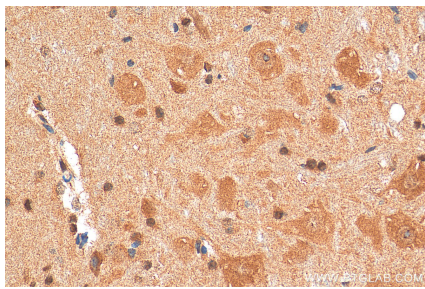
Selected Validation Data



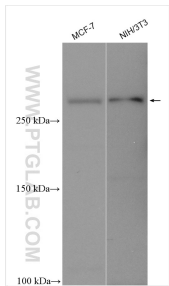
Various lysates were subjected to SDS PAGE followed by western blot with 29293-1-AP (BRWD1 antibody) at dilution of 1:500 incubated at room temperature for 1.5 hours.



Immunohistochemical analysis of paraffin-embedded mouse cerebellum tissue slide using 29293-1-AP (BRWD1 antibody) at dilution of 1:200 (under 10x lens). Heat mediated antigen retrieval with Tris-EDTA buffer (pH 9.0).



Immunohistochemical analysis of paraffin-embedded mouse cerebellum tissue slide using 29293-1-AP (BRWD1 antibody) at dilution of 1:200 (under 40x lens). Heat mediated antigen retrieval with Tris-EDTA buffer (pH 9.0).



Various lysates were subjected to SDS PAGE followed by western blot with 29293-1-AP (BRWD1 antibody) at dilution of 1:800 incubated at room temperature for 1.5 hours.