

For Research Use Only

Parvalbumin Polyclonal antibody

Catalog Number: 29312-1-AP **3 Publications**



Basic Information

Catalog Number: 29312-1-AP	GenBank Accession Number: NM_002854	Purification Method: Antigen affinity purification
Size: 150ul , Concentration: 1000 µg/ml by Nanodrop;	GeneID (NCBI): 5816	Recommended Dilutions: IHC 1:1000-1:4000 IF 1:50-1:500
Source: Rabbit	UNIPROT ID: P20472	
Isotype: IgG	Full Name: parvalbumin	
Immunogen Catalog Number: AG30189	Calculated MW: 12 kDa	

Applications

Tested Applications: IF, IHC, ELISA	Positive Controls: IHC : mouse cerebellum tissue, mouse brain tissue, rat cerebellum tissue IF : mouse cerebellum tissue, mouse brain tissue
Cited Applications: IF, WB	
Species Specificity: Human, mouse, rat	
Cited Species: mouse	

Note-IHC: suggested antigen retrieval with TE buffer pH 9.0; (*) Alternatively, antigen retrieval may be performed with citrate buffer pH 6.0

Background Information

PVALB is a high affinity calcium ion-binding protein that is structurally and functionally similar to calmodulin and troponin C. PVALB is expressed in high levels only in fast-contracting muscles and at lower levels in brain and several endocrine tissues. It is thought to be involved in muscle relaxation.

Notable Publications

Author	Pubmed ID	Journal	Application
Yoko Ino	37737267	Sci Rep	WB
Jingtang Zhu	37543943	STAR Protoc	IF
Jingtang Zhu	36936073	Cell Rep Methods	IF

Storage

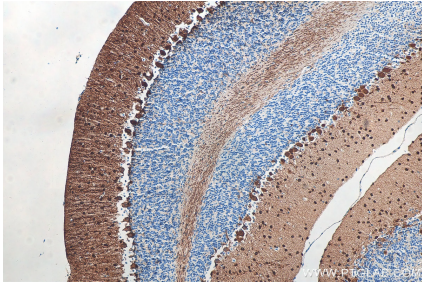
Storage:
Store at -20°C. Stable for one year after shipment.
Storage Buffer:
PBS with 0.02% sodium azide and 50% glycerol pH 7.3.
Aliquoting is unnecessary for -20°C storage

*** 20ul sizes contain 0.1% BSA

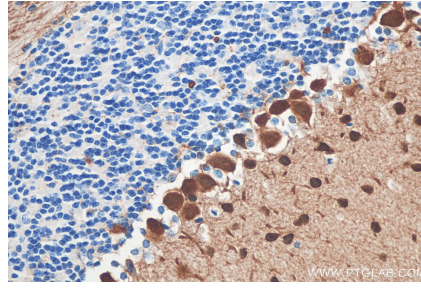
For technical support and original validation data for this product please contact:
T: 1 (888) 4PTGLAB (1-888-478-4522) (toll free in USA), or 1(312) 455-8498 (outside USA)
E: proteintech@ptglab.com
W: ptglab.com

This product is exclusively available under Proteintech Group brand and is not available to purchase from any other manufacturer.

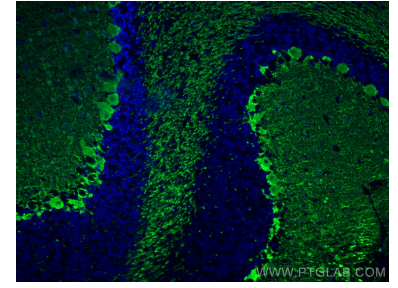
Selected Validation Data



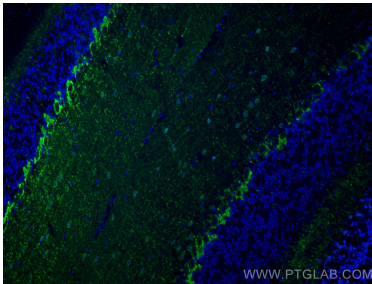
Immunohistochemical analysis of paraffin-embedded mouse cerebellum tissue slide using 29312-1-AP (Parvalbumin antibody) at dilution of 1:2000 (under 10x lens). Heat mediated antigen retrieval with Tris-EDTA buffer (pH 9.0).



Immunohistochemical analysis of paraffin-embedded mouse cerebellum tissue slide using 29312-1-AP (Parvalbumin antibody) at dilution of 1:2000 (under 40x lens). Heat mediated antigen retrieval with Tris-EDTA buffer (pH 9.0).



Immunofluorescent analysis of (4% PFA) fixed mouse cerebellum tissue using Parvalbumin antibody (29312-1-AP) at dilution of 1:200 and CoraLite®488-Conjugated AffiniPure Goat Anti-Rabbit IgG(H+L).



Immunofluorescent analysis of (4% PFA) fixed mouse cerebellum tissue using Parvalbumin antibody (29312-1-AP) at dilution of 1:200 and CoraLite®488-Conjugated AffiniPure Goat Anti-Rabbit IgG(H+L).