

For Research Use Only

# Parvalbumin Polyclonal antibody, PBS Only

Catalog Number: 29312-1-PBS



## Basic Information

<b>Catalog Number:</b> 29312-1-PBS	<b>GenBank Accession Number:</b> NM_002854	<b>Purification Method:</b> Antigen affinity purification
<b>Size:</b> 100ug , Concentration: 1 mg/ml by Nanodrop;	<b>GeneID (NCBI):</b> 5816	
<b>Source:</b> Rabbit	<b>UNIPROT ID:</b> P20472	
<b>Isotype:</b> IgG	<b>Full Name:</b> parvalbumin	
<b>Immunogen Catalog Number:</b> AG30189	<b>Calculated MW:</b> 12 kDa	
	<b>Observed MW:</b> 15 kDa	

## Applications

**Tested Applications:**  
WB, IHC, IF-P, Indirect ELISA

**Species Specificity:**  
human, mouse, rat

## Background Information

PVALB is a high affinity calcium ion-binding protein that is structurally and functionally similar to calmodulin and troponin C. PVALB is expressed in high levels only in fast-contracting muscles and at lower levels in brain and several endocrine tissues. It is thought to be involved in muscle relaxation. Monomeric (12 kDa) and dimeric (24 kDa) forms, as well as trimeric Parvalbumin (38 kDa), have been described in a literature (PMID: 19616851).

## Storage

**Storage:**  
Store at -80°C.

**Storage Buffer:**  
PBS only, pH7.3

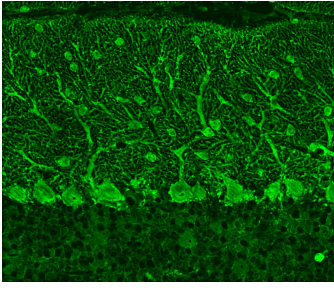
For technical support and original validation data for this product please contact:

T: 1 (888) 4PTGLAB (1-888-478-4522) (toll free in USA), or 1(312) 455-8498 (outside USA)

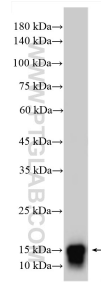
E: [proteintech@ptglab.com](mailto:proteintech@ptglab.com)  
W: [ptglab.com](http://ptglab.com)

**This product is exclusively available under Proteintech Group brand and is not available to purchase from any other manufacturer.**

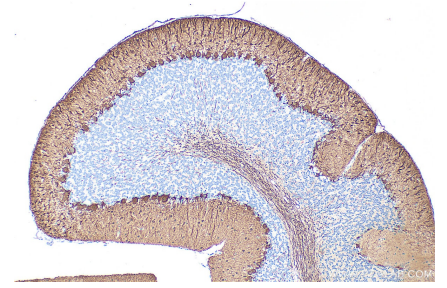
## Selected Validation Data



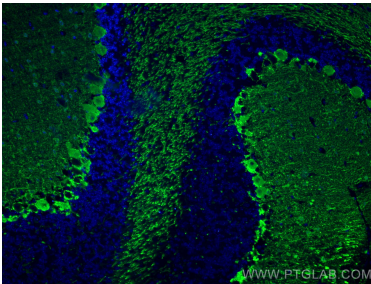
Immunofluorescent analysis of (4% PFA) fixed adult mouse cerebellum tissue using Parvalbumin antibody (29312-1-AP) at dilution of 1:1500 and Alexa Fluor 594 AffiniPure Donkey Anti-Rabbit IgG (H+L). (Image produced by Watt Lab at McGill University) This data was developed using the same antibody clone with 29312-1-PBS in a different storage buffer formulation.



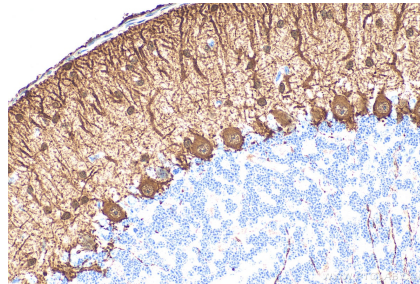
mouse brain tissue were subjected to SDS PAGE followed by western blot with 29312-1-AP (Parvalbumin antibody) at dilution of 1:1000 incubated at room temperature for 1.5 hours. This data was developed using the same antibody clone with 29312-1-PBS in a different storage buffer formulation.



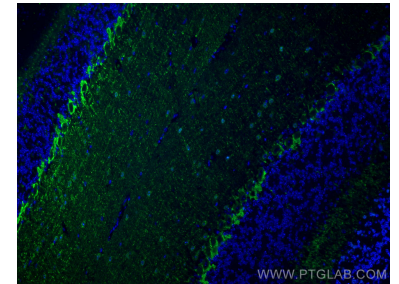
Immunohistochemical analysis of paraffin-embedded mouse cerebellum tissue slide using 29312-1-AP (Parvalbumin antibody) at dilution of 1:1000 (under 10x lens). Heat mediated antigen retrieval with Tris-EDTA buffer (pH 9.0). This data was developed using the same antibody clone with 29312-1-PBS in a different storage buffer formulation.



Immunofluorescent analysis of (4% PFA) fixed mouse cerebellum tissue using Parvalbumin antibody (29312-1-AP) at dilution of 1:200 and CoraLite®488-Conjugated AffiniPure Goat Anti-Rabbit IgG(H+L). This data was developed using the same antibody clone with 29312-1-PBS in a different storage buffer formulation.



Immunohistochemical analysis of paraffin-embedded mouse cerebellum tissue slide using 29312-1-AP (Parvalbumin antibody) at dilution of 1:1000 (under 40x lens). Heat mediated antigen retrieval with Tris-EDTA buffer (pH 9.0). This data was developed using the same antibody clone with 29312-1-PBS in a different storage buffer formulation.



Immunofluorescent analysis of (4% PFA) fixed mouse cerebellum tissue using Parvalbumin antibody (29312-1-AP) at dilution of 1:200 and CoraLite®488-Conjugated AffiniPure Goat Anti-Rabbit IgG(H+L). This data was developed using the same antibody clone with 29312-1-PBS in a different storage buffer formulation.