

For Research Use Only

C22orf32 Polyclonal antibody

Catalog Number: 29313-1-AP



Basic Information

Catalog Number: 29313-1-AP	GenBank Accession Number: BC024237	Purification Method: Antigen affinity purification
Size: 150ul , Concentration: 750 ug/ml by Nanodrop;	GeneID (NCBI): 91689	Recommended Dilutions: WB 1:500-1:2000
Source: Rabbit	UNIPROT ID: Q9H4I9	IF/ICC 1:50-1:500
Isotype: IgG	Full Name: chromosome 22 open reading frame 32	
Immunogen Catalog Number: AG29162	Observed MW: 10 kDa	

Applications

Tested Applications: WB, IF/ICC, ELISA	Positive Controls:
Species Specificity: human	WB : SW480 cells, IF/ICC : A431 cells,

Background Information

C22orf32, also known as SMDT1 or EMRE, is a 10 kDa single-channel transmembrane that contains a mitochondrial targeting sequence, a transmembrane region, and a conserved aspart-rich C-terminal. It acts as a subunit of the MCU complex and increases mCa²⁺ uptake by activating the MCU function (PMID: 38417574).

Storage

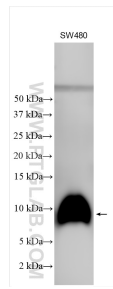
Storage:
Store at -20°C. Stable for one year after shipment.
Storage Buffer:
PBS with 0.02% sodium azide and 50% glycerol pH 7.3.
Aliquoting is unnecessary for -20°C storage

*** 20ul sizes contain 0.1% BSA

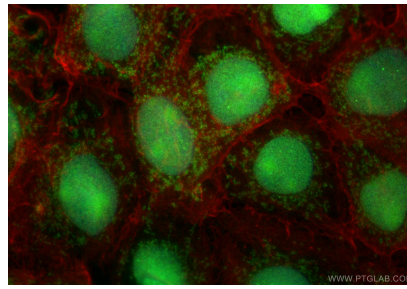
For technical support and original validation data for this product please contact:
T: 1 (888) 4PTGLAB (1-888-478-4522) (toll free in USA), or 1(312) 455-8498 (outside USA)
E: proteintech@ptglab.com
W: ptglab.com

This product is exclusively available under Proteintech Group brand and is not available to purchase from any other manufacturer.

Selected Validation Data



Various lysates were subjected to SDS PAGE followed by western blot with 29313-1-AP (C22orf32 antibody) at dilution of 1:1000 incubated at room temperature for 1.5 hours.



Immunofluorescent analysis of (4% PFA) fixed A431 cells using C22orf32 antibody (29313-1-AP) at dilution of 1:200 and Multi-rAb CoraLite® Plus 488-Goat Anti-Rabbit Recombinant Secondary Antibody (H+L) (RGAR002), CL594-Phalloidin (red).