

For Research Use Only

# METTL3 Polyclonal antibody

Catalog Number: 29314-1-AP



## Basic Information

<b>Catalog Number:</b> 29314-1-AP	<b>GenBank Accession Number:</b> BC001650	<b>Purification Method:</b> Antigen affinity purification
<b>Size:</b> 150ul , Concentration: 300 ug/ml by Nanodrop;	<b>GeneID (NCBI):</b> 56339	<b>Recommended Dilutions:</b> WB 1:500-1:3000 IHC 1:400-1:1600
<b>Source:</b> Rabbit	<b>UNIPROT ID:</b> Q86U44	
<b>Isotype:</b> IgG	<b>Full Name:</b> methyltransferase like 3	
<b>Immunogen Catalog Number:</b> AG30638	<b>Calculated MW:</b> 64 kDa	
	<b>Observed MW:</b> 65-70 kDa	

## Applications

<b>Tested Applications:</b> WB, IHC, ELISA	<b>Positive Controls:</b>
<b>Species Specificity:</b> Human, Mouse, Rat, Monkey	<b>WB :</b> HeLa cells, Neuro-2a cells, K-562 cells, MCF-7 cells, COS-7 cells, mouse testis tissue, rat testis tissue
<b>Note-IHC:</b> suggested antigen retrieval with <b>TE buffer pH 9.0; (*) Alternatively, antigen retrieval may be performed with citrate buffer pH 6.0</b>	<b>IHC :</b> human lung cancer tissue, human stomach cancer tissue

## Background Information

METTL3 is a key S-adenosyl-L-methionine-binding subunit, which is a component of a complex multicomponent enzyme that catalyzes the methylation of internal adenosine residues in eukaryotic mRNA, forming N6-methyladenosine. It contains 2 putative nuclear localization signals and 2 consensus methylation motifs. The calculated molecular weight of METTL3 is 64 kDa, but modified METTL3 is about 65-70 kDa.

## Storage

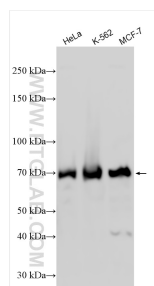
**Storage:**  
Store at -20°C. Stable for one year after shipment.  
**Storage Buffer:**  
PBS with 0.02% sodium azide and 50% glycerol pH 7.3.  
Aliquoting is unnecessary for -20°C storage

\*\*\* 20ul sizes contain 0.1% BSA

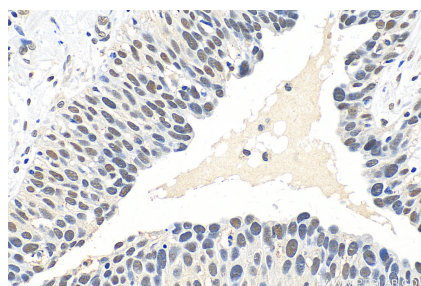
For technical support and original validation data for this product please contact:  
T: 1 (888) 4PTGLAB (1-888-478-4522) (toll free in USA), or 1(312) 455-8498 (outside USA)  
E: [proteintech@ptglab.com](mailto:proteintech@ptglab.com)  
W: [ptglab.com](http://ptglab.com)

This product is exclusively available under Proteintech Group brand and is not available to purchase from any other manufacturer.

## Selected Validation Data



Various lysates were subjected to SDS PAGE followed by western blot with 29314-1-AP (METTL3 antibody) at dilution of 1:1500 incubated at room temperature for 1.5 hours.



Immunohistochemical analysis of paraffin-embedded human lung cancer tissue slide using 29314-1-AP (METTL3 antibody) at dilution of 1:800 (under 40x lens). Heat mediated antigen retrieval with Tris-EDTA buffer (pH 9.0).