

For Research Use Only

# SPATA2 Polyclonal antibody

Catalog Number: 29321-1-AP



## Basic Information

<b>Catalog Number:</b> 29321-1-AP	<b>GenBank Accession Number:</b> BC009481	<b>Purification Method:</b> Antigen affinity purification
<b>Size:</b> 150ul , Concentration: 600 µg/ml by Nanodrop;	<b>GeneID (NCBI):</b> 9825	<b>Recommended Dilutions:</b> WB 1:2000-1:10000 IHC 1:50-1:500 IF 1:50-1:500
<b>Source:</b> Rabbit	<b>Full Name:</b> spermatogenesis associated 2	
<b>Isotype:</b> IgG	<b>Calculated MW:</b> 58 kDa	
<b>Immunogen Catalog Number:</b> AG30773	<b>Observed MW:</b> 58-60 kDa	

## Applications

### Tested Applications:

IF, IHC, WB, ELISA

### Species Specificity:

Human, mouse, rat

**Note-IHC: suggested antigen retrieval with TE buffer pH 9.0; (\*) Alternatively, antigen retrieval may be performed with citrate buffer pH 6.0**

### Positive Controls:

WB : mouse testis tissue, rat testis tissue

IHC : mouse lung tissue,

IF : HeLa cells,

## Background Information

The protein SPATA2 (spermatogenesis-associated protein 2) was initially shown to be highly expressed in testicular Sertoli cells, and these early reports suggested SPATA2 to play a role in spermatogenesis. More recently, it was discussed to be involved in the predisposition for psoriasis. SPATA2 is required for TNF-induced cell death. SPATA2 has a potential role during pancreatic development and  $\beta$ -cell proliferation.(PMID: 20119533/PMID: 27458237)

## Storage

### Storage:

Store at -20°C.

### Storage Buffer:

PBS with 0.02% sodium azide and 50% glycerol pH 7.3.

Aliquoting is unnecessary for -20°C storage

\*\*\* 20ul sizes contain 0.1% BSA

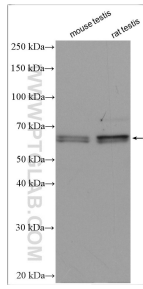
For technical support and original validation data for this product please contact:

T: 1 (888) 4PTGLAB (1-888-478-4522) (toll free in USA), or 1(312) 455-8498 (outside USA)

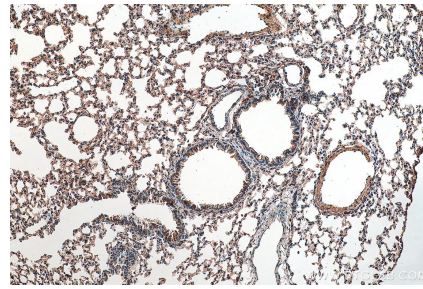
E: proteintech@ptglab.com  
W: ptglab.com

This product is exclusively available under Proteintech Group brand and is not available to purchase from any other manufacturer.

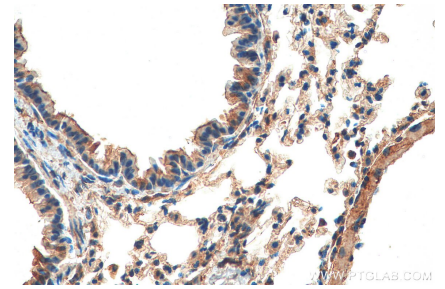
## Selected Validation Data



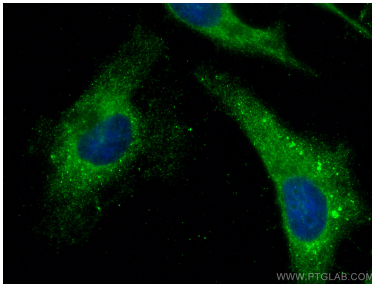
Various lysates were subjected to SDS PAGE followed by western blot with 29321-1-AP (SPATA2 antibody) at dilution of 1:5000 incubated at room temperature for 1.5 hours.



Immunohistochemical analysis of paraffin-embedded mouse lung tissue slide using 29321-1-AP (SPATA2 antibody) at dilution of 1:200 (under 10x lens). Heat mediated antigen retrieval with Tris-EDTA buffer (pH 9.0).



Immunohistochemical analysis of paraffin-embedded mouse lung tissue slide using 29321-1-AP (SPATA2 antibody) at dilution of 1:200 (under 40x lens). Heat mediated antigen retrieval with Tris-EDTA buffer (pH 9.0).



Immunofluorescent analysis of (-20°C Ethanol) fixed HeLa cells using SPATA2 antibody (29321-1-AP) at dilution of 1:200 and CoraLite®488-Conjugated AffiniPure Goat Anti-Rabbit IgG(H+L).