

For Research Use Only

# TFEC Polyclonal antibody

Catalog Number: 29324-1-AP



## Basic Information

### Catalog Number:

29324-1-AP

### Size:

150ul , Concentration: 600 ug/ml by Nanodrop;

### Source:

Rabbit

### Isotype:

IgG

### Immunogen Catalog Number:

AG30973

### GenBank Accession Number:

BC029891

### GeneID (NCBI):

22797

### UNIPROT ID:

O14948

### Full Name:

transcription factor EC

### Calculated MW:

347 aa, 39 kDa

### Observed MW:

37-50 kDa

### Purification Method:

Antigen affinity purification

### Recommended Dilutions:

WB 1:1000-1:4000

## Applications

### Tested Applications:

WB, ELISA

### Species Specificity:

Human, mouse, rat

### Positive Controls:

WB : HepG2 cells, mouse testis tissue, rat testis tissue

## Background Information

The DNA-binding factor TFE3 contains adjacent helix-loop-helix (HLH) and leucine zipper (LZ) domains flanked by an upstream basic region. These protein motifs are frequently observed in other transcription factors and are particularly common to members of the Myc family. TFEC shares a bHLH/LZ structure with TFE3 and a closely related protein microphthalmia-associated transcription factor (MITF), which is critically involved in melanocyte differentiation. The expression of TFEC is mainly in fibroblasts, myoblasts, chondrosarcoma cells and myeloma cells. 50kDa human TFEC isoforms are produced by alternative splicing (PMID: 29303964, PMID: 11467950).

## Storage

### Storage:

Store at -20°C. Stable for one year after shipment.

### Storage Buffer:

PBS with 0.02% sodium azide and 50% glycerol pH 7.3.

Aliquoting is unnecessary for -20°C storage

\*\*\* 20ul sizes contain 0.1% BSA

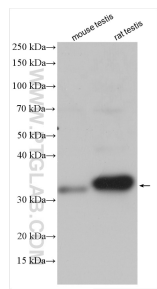
For technical support and original validation data for this product please contact:

T: 1 (888) 4PTGLAB (1-888-478-4522) (toll free in USA), or 1(312) 455-8498 (outside USA)

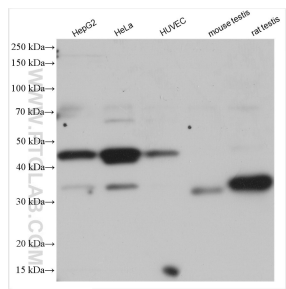
E: [proteintech@ptglab.com](mailto:proteintech@ptglab.com)  
W: [ptglab.com](http://ptglab.com)

This product is exclusively available under Proteintech Group brand and is not available to purchase from any other manufacturer.

## Selected Validation Data



Various lysates were subjected to SDS PAGE followed by western blot with 29324-1-AP (TFEC antibody) at dilution of 1:2000 incubated at room temperature for 1.5 hours.



Various lysates were subjected to SDS PAGE followed by western blot with 29324-1-AP (TFEC antibody) at dilution of 1:2000 incubated at room temperature for 1.5 hours.