

For Research Use Only

GPX1 Polyclonal antibody

Catalog Number: 29329-1-AP **10 Publications**



Basic Information

Catalog Number: 29329-1-AP	GenBank Accession Number: BC000742	Purification Method: Antigen affinity purification
Size: 150ul , Concentration: 550 µg/ml by Nanodrop;	GeneID (NCBI): 2876	Recommended Dilutions: WB 1:2000-1:10000
Source: Rabbit	UNIPROT ID: P07203	
Isotype: IgG	Full Name: glutathione peroxidase 1	
Immunogen Catalog Number: AG31101	Calculated MW: 22 kDa	
	Observed MW: 22 kDa	

Applications

Tested Applications: WB, ELISA	Positive Controls: WB : HEK-293 cells, THP-1 cells, mouse kidney tissue, rat kidney tissue, SMMC-7721 cells
Cited Applications: WB,IF	
Species Specificity: Human, Mouse, Rat	
Cited Species: human, rat, mouse, pig	

Background Information

Gpx protein, known as selenoprotein, consists selenium in its catalytic site. Gpx1 is an abundant isoform, which involves in scavenging endogenous ROS using electron provided by reduced glutathione and ubiquitously expressed the cytoplasm and mitochondria of all cell types. (PMID: 30632027)

Notable Publications

Author	Pubmed ID	Journal	Application
Jiayu Li	36296678	Molecules	WB
Yanan Chen	36225099	J Agric Food Chem	WB
Pei Qian	35745637	Pharmaceuticals (Basel)	WB

Storage

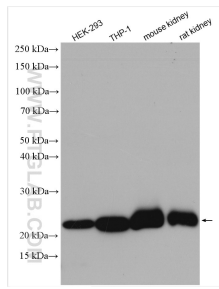
Storage:
Store at -20°C. Stable for one year after shipment.
Storage Buffer:
PBS with 0.02% sodium azide and 50% glycerol pH 7.3.
Aliquoting is unnecessary for -20°C storage

*** 20ul sizes contain 0.1% BSA

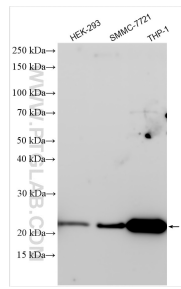
For technical support and original validation data for this product please contact:
T: 1 (888) 4PTGLAB (1-888-478-4522) (toll free in USA), or 1(312) 455-8498 (outside USA) E: proteintech@ptglab.com W: ptglab.com

This product is exclusively available under Proteintech Group brand and is not available to purchase from any other manufacturer.

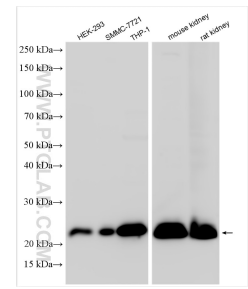
Selected Validation Data



Various lysates were subjected to SDS PAGE followed by western blot with 29329-1-AP (GPX1 antibody) at dilution of 1:4000 incubated at room temperature for 1.5 hours.



Various lysates were subjected to SDS PAGE followed by western blot with 29329-1-AP (GPX1 antibody) at dilution of 1:5000 incubated at room temperature for 1.5 hours.



Various lysates were subjected to SDS PAGE followed by western blot with 29329-1-AP (GPX1 antibody) at dilution of 1:5000 incubated at room temperature for 1.5 hours.