

For Research Use Only

# Renin Polyclonal antibody, PBS Only

Catalog Number: 29330-1-PBS



## Basic Information

<b>Catalog Number:</b> 29330-1-PBS	<b>GenBank Accession Number:</b> BC047752	<b>Purification Method:</b> Antigen affinity purification
<b>Size:</b> 100ug , Concentration: 1 mg/ml by Nanodrop;	<b>GeneID (NCBI):</b> 5972	
<b>Source:</b> Rabbit	<b>UNIPROT ID:</b> P00797	
<b>Isotype:</b> IgG	<b>Full Name:</b> renin	
<b>Immunogen Catalog Number:</b> AG31071	<b>Calculated MW:</b> 45 kDa	
	<b>Observed MW:</b> 45 kDa	

## Applications

**Tested Applications:**  
WB, IF/ICC, Indirect ELISA

**Species Specificity:**  
human, monkey

## Background Information

Renin is an aspartic protease that consists of 2 homologous lobes, produced as pre-prorenin protein and transferred into the cisterns of the endoplasmic reticulum. Renin is mainly produced and released into circulation by the so-called juxtaglomerular epithelioid cells, located in the walls of renal afferent arterioles at the entrance of the glomerular capillary network (PMID: 16525949). REN has 2 isoforms produced by alternative splicing with a molecular weight of 45-47kDa.

## Storage

**Storage:**  
Store at -80°C.  
**Storage Buffer:**  
PBS Only

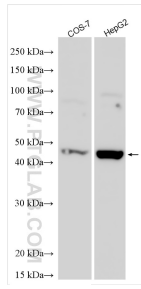
For technical support and original validation data for this product please contact:

T: 1 (888) 4PTGLAB (1-888-478-4522) (toll free in USA), or 1(312) 455-8498 (outside USA)

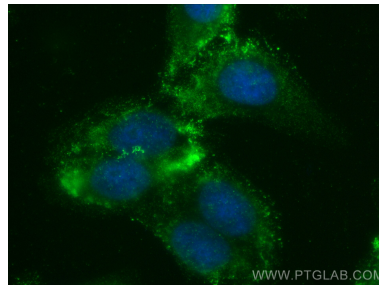
E: [proteintech@ptglab.com](mailto:proteintech@ptglab.com)  
W: [ptglab.com](http://ptglab.com)

**This product is exclusively available under Proteintech Group brand and is not available to purchase from any other manufacturer.**

## Selected Validation Data



Various lysates were subjected to SDS PAGE followed by western blot with 29330-1-AP (Renin antibody) at dilution of 1:500 incubated at room temperature for 1.5 hours. This data was developed using the same antibody clone with 29330-1-PBS in a different storage buffer formulation.



Immunofluorescent analysis of (-20°C Ethanol) fixed HepG2 cells using Renin antibody (29330-1-AP) at dilution of 1:200 and Multi-rAb CoraLite® Plus 488-Goat Anti-Rabbit Recombinant Secondary Antibody (H+L) (RGAR002). This data was developed using the same antibody clone with 29330-1-PBS in a different storage buffer formulation.