

For Research Use Only

# TAS1R2 Polyclonal antibody

Catalog Number: 29344-1-AP

1 Publications



## Basic Information

Catalog Number:

29344-1-AP

Size:

150ul, Concentration: 850 ug/ml by Nanodrop;

Source:

Rabbit

Isotype:

IgG

Immunogen Catalog Number:

AG29305

GenBank Accession Number:

NM\_152232

GeneID (NCBI):

80834

UNIPROT ID:

Q8TE23

Full Name:

taste receptor, type 1, member 2

Calculated MW:

95 kDa

Observed MW:

100 kDa

Purification Method:

Antigen affinity purification

Recommended Dilutions:

WB 1:500-1:2000

## Applications

Tested Applications:

WB, ELISA

Cited Applications:

WB

Species Specificity:

Human, mouse, rat

Cited Species:

rat

Positive Controls:

WB : mouse tongue tissue, rat tongue tissue

## Background Information

Taste receptor type 1, member 2 (TAS1R2) controls the oral sensing of sweetness. Genetic variations in TAS1R2 have been shown to be associated with differential sweetness intensity and varying carbohydrate intake levels among individuals (PMID:33930495).

## Notable Publications

Author	Pubmed ID	Journal	Application
Haihui Jiang	38718889	J Ethnopharmacol	WB

## Storage

Storage:

Store at -20°C. Stable for one year after shipment.

Storage Buffer:

PBS with 0.02% sodium azide and 50% glycerol pH 7.3.

Aliquoting is unnecessary for -20°C storage

\*\*\* 20ul sizes contain 0.1% BSA

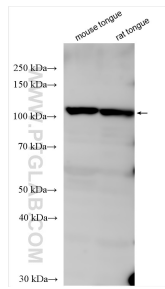
For technical support and original validation data for this product please contact:

T: 1 (888) 4PTGLAB (1-888-478-4522) (toll free in USA), or 1(312) 455-8498 (outside USA)

E: [proteintech@ptglab.com](mailto:proteintech@ptglab.com)  
W: [ptglab.com](http://ptglab.com)

This product is exclusively available under Proteintech Group brand and is not available to purchase from any other manufacturer.

## Selected Validation Data



Various lysates were subjected to SDS PAGE followed by western blot with 29344-1-AP (TAS1R2 antibody) at dilution of 1:1000 incubated at room temperature for 1.5 hours.