

For Research Use Only

# ABR Polyclonal antibody, PBS Only

Catalog Number: 29350-1-PBS

Featured Product



## Basic Information

**Catalog Number:**

29350-1-PBS

**Size:**

100ug, Concentration: 1 mg/ml by Nanodrop;

**Source:**

Rabbit

**Isotype:**

IgG

**Immunogen Catalog Number:**

AG29522

**GenBank Accession Number:**

NM\_021962

**GeneID (NCBI):**

29

**UNIPROT ID:**

Q12979

**Full Name:**

active BCR-related gene

**Calculated MW:**

98 kDa

**Observed MW:**

97-100 kDa

**Purification Method:**

Antigen affinity purification

## Applications

**Tested Applications:**

WB, IHC, Indirect ELISA

**Species Specificity:**

human, mouse, rat

## Background Information

ABR (Active breakpoint cluster region-related protein) is the only protein known in humans and mice to share high homology with BCR (68% amino acid identity). BCR (Breakpoint cluster region) gene was originally identified due to its involvement in a specific chromosomal translocation that causes the development of chronic myeloid leukemia and a subset of acute lymphoblastic leukemia. The C-terminus is a GTPase-activating protein domain which stimulates GTP hydrolysis by RAC1, RAC2 and CDC42. (PMID: 17116687, PMID: 37507586)

## Storage

**Storage:**

Store at -80°C.

**Storage Buffer:**

PBS only, pH7.3

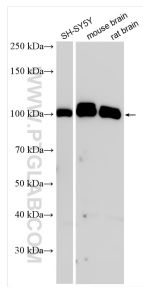
For technical support and original validation data for this product please contact:

T: 1 (888) 4PTGLAB (1-888-478-4522) (toll free in USA), or 1(312) 455-8498 (outside USA)

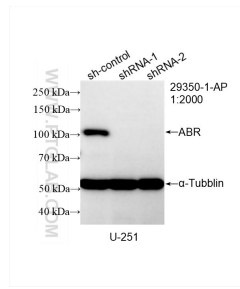
E: [proteintech@ptglab.com](mailto:proteintech@ptglab.com)  
W: [ptglab.com](http://ptglab.com)

**This product is exclusively available under Proteintech Group brand and is not available to purchase from any other manufacturer.**

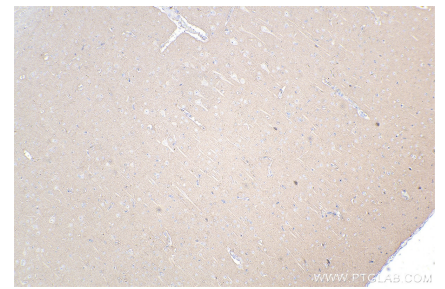
## Selected Validation Data



Various lysates were subjected to SDS PAGE followed by western blot with 29350-1-AP (ABR antibody) at dilution of 1:2000 incubated at room temperature for 1.5 hours. This data was developed using the same antibody clone with 29350-1-PBS in a different storage buffer formulation.



WB result of ABR antibody (29350-1-AP; 1:2000; incubated at room temperature for 1.5 hours) with sh-Control and sh-ABR transfected U-251 cells. This data was developed using the same antibody clone with 29350-1-PBS in a different storage buffer formulation.



Immunohistochemical analysis of paraffin-embedded rat brain tissue slide using 29350-1-AP (ABR antibody) at dilution of 1:1000 (under 10x lens). Heat mediated antigen retrieval with Tris-EDTA buffer (pH 9.0). This data was developed using the same antibody clone with 29350-1-PBS in a different storage buffer formulation.