

For Research Use Only

# NPPC Polyclonal antibody

Catalog Number: 29352-1-AP



## Basic Information

<b>Catalog Number:</b> 29352-1-AP	<b>GenBank Accession Number:</b> NM_024409	<b>Purification Method:</b> Antigen affinity purification
<b>Size:</b> 150ul , Concentration: 550 ug/ml by Nanodrop;	<b>GeneID (NCBI):</b> 4880	<b>Recommended Dilutions:</b> IHC: 1:50-1:500 IF-P: 1:50-1:500
<b>Source:</b> Rabbit	<b>UNIPROT ID:</b> P23582	
<b>Isotype:</b> IgG	<b>Full Name:</b> natriuretic peptide precursor C	
<b>Immunogen Catalog Number:</b> AG29609	<b>Calculated MW:</b> 13 kDa	

## Applications

<b>Tested Applications:</b> IHC, IF-P, ELISA	<b>Positive Controls:</b>
<b>Species Specificity:</b> human, mouse, rat	<b>IHC :</b> rat heart tissue, <b>IF-P :</b> mouse heart tissue,

**Note-IHC: suggested antigen retrieval with TE buffer pH 9.0; (\*) Alternatively, antigen retrieval may be performed with citrate buffer pH 6.0**

## Background Information

NPPC (C-type natriuretic peptide) is also named as CNP2, and belongs to the natriuretic peptide family. More recent studies have shown that in growing and preovulatory follicles, granulosa cells secrete into the follicular fluid, a C-type natriuretic peptide (NPPC, also known as CNP) capable of binding to cumulus cells membrane natriuretic peptide receptor 2 (NPR2, also known as guanylate cyclase B). The CNP/NPR2 complex, acting actively as guanylate cyclase, increases the concentration of cGMP both in cumulus cells and, indirectly, in the oocyte, maintaining meiosis arrest. The cAMP level is maintained due to the upstream activity type C natriuretic peptide (CNP, NPPC), produced by the granulosa cells, which is responsible for the production of cyclic guanosine monophosphate (cGMP) after binding to a specific NPR2 receptor (PMID: 35209923, PMID: 25183874, PMID: 20947764).

## Storage

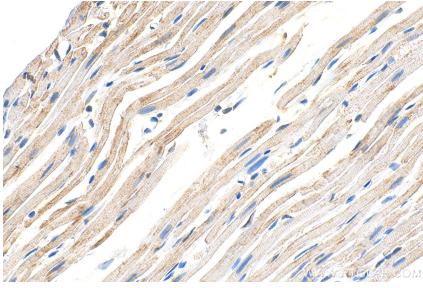
**Storage:**  
Store at -20°C. Stable for one year after shipment.  
**Storage Buffer:**  
PBS with 0.02% sodium azide and 50% glycerol, pH7.3  
Aliquoting is unnecessary for -20°C storage

\*\*\* 20ul sizes contain 0.1% BSA

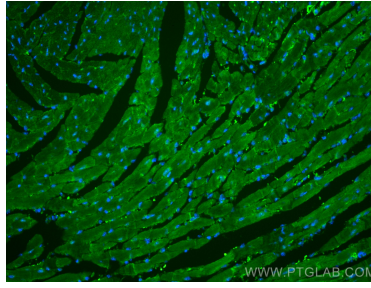
For technical support and original validation data for this product please contact:  
T: 1 (888) 4PTGLAB (1-888-478-4522) (toll free in USA), or 1(312) 455-8498 (outside USA)  
E: proteintech@ptglab.com  
W: ptglab.com

This product is exclusively available under Proteintech Group brand and is not available to purchase from any other manufacturer.

## Selected Validation Data



Immunohistochemical analysis of paraffin-embedded rat heart tissue slide using 29352-1-AP (NPPC antibody) at dilution of 1:200 (under 40x lens). Heat mediated antigen retrieval with Tris-EDTA buffer (pH 9.0).



Immunofluorescent analysis of (4% PFA) fixed paraffin-embedded mouse heart tissue using NPPC antibody (29352-1-AP) at dilution of 1:200 and CoraLite®488-Conjugated Goat Anti-Rabbit IgG(H+L) (SA00013-2). Heat mediated antigen retrieval with Tris-EDTA buffer (pH 9.0).