

For Research Use Only

NPPC Polyclonal antibody, PBS Only

Catalog Number:29352-1-PBS



Basic Information

Catalog Number: 29352-1-PBS	GenBank Accession Number: NM_024409	Purification Method: Antigen affinity purification
Size: 100ug, Concentration: 1 mg/ml by Nanodrop;	GeneID (NCBI): 4880	
Source: Rabbit	UNIPROT ID: P23582	
Isotype: IgG	Full Name: natriuretic peptide precursor C	
Immunogen Catalog Number: AG29609	Calculated MW: 13 kDa	

Applications

Tested Applications:
IHC, IF-P, Indirect ELISA

Species Specificity:
human, mouse, rat

Background Information

NPPC (C-type natriuretic peptide) is also named as CNP2, and belongs to the natriuretic peptide family. More recent studies have shown that in growing and preovulatory follicles, granulosa cells secrete into the follicular fluid, a C-type natriuretic peptide (NPPC, also known as CNP) capable of binding to cumulus cells membrane natriuretic peptide receptor 2 (NPR2, also known as guanylate cyclase B). The CNP/NPR2 complex, acting actively as guanylate cyclase, increases the concentration of cGMP both in cumulus cells and, indirectly, in the oocyte, maintaining meiosis arrest. The cAMP level is maintained due to the upstream activity type C natriuretic peptide (CNP, NPPC), produced by the granulosa cells, which is responsible for the production of cyclic guanosine monophosphate (cGMP) after binding to a specific NPR2 receptor (PMID: 35209923, PMID: 25183874, PMID: 20947764).

Storage

Storage:
Store at -80°C.

Storage Buffer:
PBS only, pH7.3

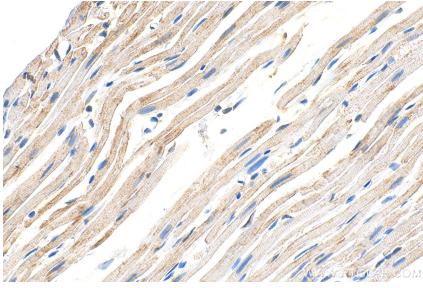
For technical support and original validation data for this product please contact:

T: 1 (888) 4PTGLAB (1-888-478-4522) (toll free in USA), or 1(312) 455-8498 (outside USA)

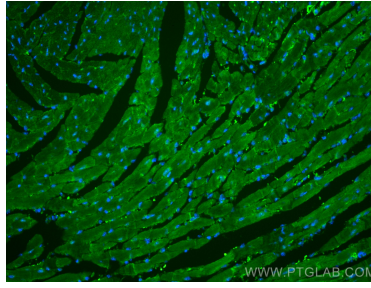
E: proteintech@ptglab.com
W: ptglab.com

This product is exclusively available under Proteintech Group brand and is not available to purchase from any other manufacturer.

Selected Validation Data



Immunohistochemical analysis of paraffin-embedded rat heart tissue slide using 29352-1-AP (NPPC antibody) at dilution of 1:200 (under 40x lens). Heat mediated antigen retrieval with Tris-EDTA buffer (pH 9.0). This data was developed using the same antibody clone with 29352-1-PBS in a different storage buffer formulation.



Immunofluorescent analysis of (4% PFA) fixed paraffin-embedded mouse heart tissue using NPPC antibody (29352-1-AP) at dilution of 1:200 and CoraLite® 488-Conjugated Goat Anti-Rabbit IgG(H+L) (SA00013-2). Heat mediated antigen retrieval with Tris-EDTA buffer (pH 9.0). This data was developed using the same antibody clone with 29352-1-PBS in a different storage buffer formulation.