

For Research Use Only

# INPP5E Polyclonal antibody

Catalog Number: 29353-1-AP



## Basic Information

### Catalog Number:

29353-1-AP

### Size:

150ul, Concentration: 500 ug/ml by Nanodrop;

### Source:

Rabbit

### Isotype:

IgG

### Immunogen Catalog Number:

AG30305

### GenBank Accession Number:

BC028032

### GeneID (NCBI):

56623

### UNIPROT ID:

Q9NRR6

### Full Name:

inositol polyphosphate-5-phosphatase, 72 kDa

### Calculated MW:

644 aa, 70 kDa

### Observed MW:

70 kDa

### Purification Method:

Antigen affinity purification

### Recommended Dilutions:

WB 1:500-1:3000

IF/ICC 1:50-1:500

## Applications

### Tested Applications:

WB, IF/ICC, ELISA

### Species Specificity:

Human, mouse, rat

### Positive Controls:

WB : HEK-293 cells, mouse testis tissue, rat testis tissue

IF/ICC : ARPE-19 cells,

## Background Information

INPP5E (72 kDa inositol polyphosphate 5-phosphatase) converts phosphatidylinositol 3,4,5-trisphosphate (PtdIns 3,4,5-P<sub>3</sub>) to PtdIns-P<sub>2</sub>. In mouse, highest protein expression was in brain, heart, and testis, with lower expression in thymus and lung, and very little expression in kidney, spleen, and liver (PMID:10764818). Defects in INPP5E are the cause of Joubert syndrome type 1 (JBT51) and mental retardation-truncal obesity-retinal dystrophy-micropenis (MORMS) (PMID:19668215). It has 2 isoforms with the molecular mass of 66 kDa and 70 kDa.

## Storage

### Storage:

Store at -20°C. Stable for one year after shipment.

### Storage Buffer:

PBS with 0.02% sodium azide and 50% glycerol pH 7.3.

Aliquoting is unnecessary for -20°C storage

\*\*\* 20ul sizes contain 0.1% BSA

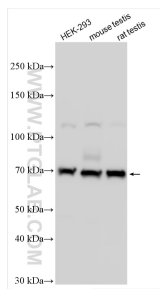
For technical support and original validation data for this product please contact:

T: 1 (888) 4PTGLAB (1-888-478-4522) (toll free in USA), or 1(312) 455-8498 (outside USA)

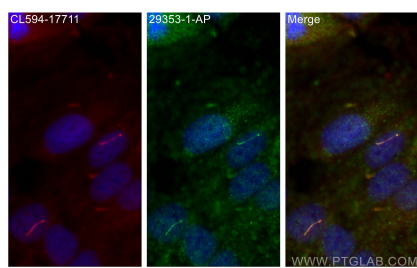
E: [proteintech@ptglab.com](mailto:proteintech@ptglab.com)  
W: [ptglab.com](http://ptglab.com)

This product is exclusively available under Proteintech Group brand and is not available to purchase from any other manufacturer.

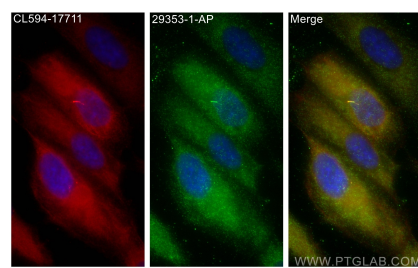
## Selected Validation Data



Various lysates were subjected to SDS PAGE followed by western blot with 29353-1-AP (INPP5E antibody) at dilution of 1:1500 incubated at room temperature for 1.5 hours.



Immunofluorescent analysis of (4% PFA) fixed ARPE-19 cells using INPP5E antibody (29353-1-AP) at dilution of 1:200 and CoraLite®488-Conjugated AffiniPure Goat Anti-Rabbit IgG(H+L).



Immunofluorescent analysis of (-20°C Methanol) fixed ARPE-19 cells using INPP5E antibody (29353-1-AP) at dilution of 1:200 and CoraLite®488-Conjugated AffiniPure Goat Anti-Rabbit IgG(H+L).