

For Research Use Only

PPP2R5A Polyclonal antibody

Catalog Number: 29365-1-AP



Basic Information

Catalog Number:

29365-1-AP

Size:

150ul, Concentration: 800 ug/ml by Nanodrop;

Source:

Rabbit

Isotype:

IgG

Immunogen Catalog Number:

AG31072

GenBank Accession Number:

BC022474

GeneID (NCBI):

5525

UNIPROT ID:

Q15172

Full Name:

protein phosphatase 2, regulatory subunit B', alpha isoform

Calculated MW:

486 aa, 56 kDa

Observed MW:

50-56 kDa

Purification Method:

Antigen affinity purification

Recommended Dilutions:

WB 1:2000-1:10000

Applications

Tested Applications:

WB, ELISA

Species Specificity:

Human, Mouse, Rat

Positive Controls:

WB : Jurkat cells, mouse heart tissue, rat heart tissue

Background Information

Protein phosphatase 2, regulatory subunit B (B56), alpha isoform (PPP2R5A) is one of the regulatory subunits of the protein phosphatase 2A (PP2A), which is a major member of protein serine/threonine phosphatases in cells. PPP2R5A can regulate the cellular location, substrate specification and protein phosphatase function of PP2A, through which PPP2R5A plays an important role in many cellular activities. It has been reported that PPP2R5A relates with many diseases including cancers by regulating many crucial signaling pathways involved in P53, Bcl-2, CDK, MAPK, JAK/STAT, c-Myc and β -Catenin.

Storage

Storage:

Store at -20°C. Stable for one year after shipment.

Storage Buffer:

PBS with 0.02% sodium azide and 50% glycerol pH 7.3.

Aliquoting is unnecessary for -20°C storage

*** 20ul sizes contain 0.1% BSA

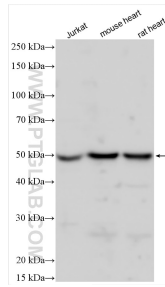
For technical support and original validation data for this product please contact:

T: 1 (888) 4PTGLAB (1-888-478-4522) (toll free in USA), or 1(312) 455-8498 (outside USA)

E: proteintech@ptglab.com
W: ptglab.com

This product is exclusively available under Proteintech Group brand and is not available to purchase from any other manufacturer.

Selected Validation Data



Various lysates were subjected to SDS PAGE followed by western blot with 29365-1-AP (PPP2R5A antibody) at dilution of 1:5000 incubated at room temperature for 1.5 hours.