

For Research Use Only

SLC6A19 Polyclonal antibody

Catalog Number: 29372-1-AP



Basic Information

Catalog Number: 29372-1-AP	GenBank Accession Number: BC148801	Purification Method: Antigen affinity purification
Size: 150ul , Concentration: 700 µg/ml by Nanodrop;	GeneID (NCBI): 340024	Recommended Dilutions: WB 1:500-1:2000 IHC 1:50-1:500
Source: Rabbit	Full Name: solute carrier family 6 (neutral amino acid transporter), member 19	
Isotype: IgG	Calculated MW: 634 aa, 71 kDa	
Immunogen Catalog Number: AG31076	Observed MW: 71 kDa	

Applications

Tested Applications:

IHC, WB, ELISA

Species Specificity:

Human, mouse, rat

Note-IHC: suggested antigen retrieval with TE buffer pH 9.0; (*) Alternatively, antigen retrieval may be performed with citrate buffer pH 6.0

Positive Controls:

WB : mouse kidney tissue, HeLa cells, rat kidney

IHC : human kidney tissue, human small intestine tissue

Background Information

SLC6A19, also named as B0AT1, encodes system B(0) transmembrane protein that mediates epithelial resorption of neutral amino acids across the apical membrane in kidney and intestine (PubMed: 15044460). The protein contains 634 amino acids and has 12 predicted transmembrane regions with highly expression in human kidney and small intestine and minimal in pancreas (PubMed: 15286787). The expression of SLC6A19 in intestinal cells depends on angiotensin converting enzyme 2 which is the cellular receptor for SARS-CoV-2 (PubMed: 32132184). Mutations in SLC6A19 cause Hartnup disease (PMID: 15286787, PMID: 15286788).

Storage

Storage:

Store at -20°C. Stable for one year after shipment.

Storage Buffer:

PBS with 0.02% sodium azide and 50% glycerol pH 7.3.

Aliquoting is unnecessary for -20°C storage

*** 20ul sizes contain 0.1% BSA

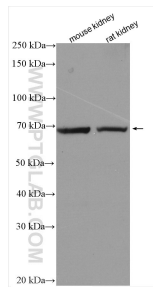
For technical support and original validation data for this product please contact:

T: 1 (888) 4PTGLAB (1-888-478-4522) (toll free in USA), or 1(312) 455-8498 (outside USA)

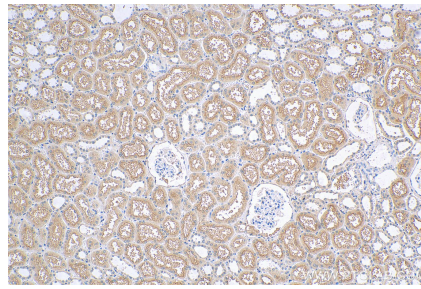
E: proteintech@ptglab.com
W: ptglab.com

This product is exclusively available under Proteintech Group brand and is not available to purchase from any other manufacturer.

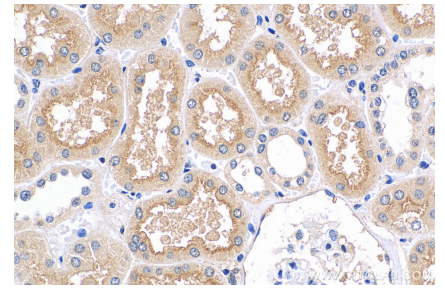
Selected Validation Data



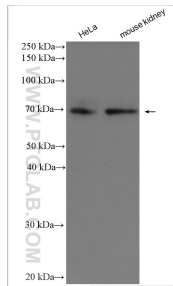
Various lysates were subjected to SDS PAGE followed by western blot with 29372-1-AP (SLC6A19 antibody) at dilution of 1:1000 incubated at room temperature for 1.5 hours.



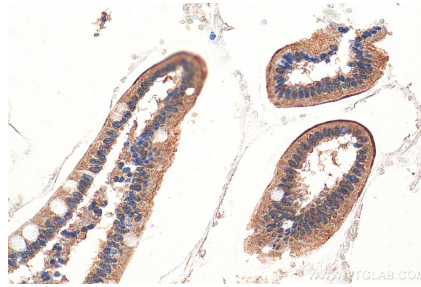
Immunohistochemical analysis of paraffin-embedded human kidney tissue slide using 29372-1-AP (SLC6A19 antibody) at dilution of 1:200 (under 10x lens). Heat mediated antigen retrieval with Tris-EDTA buffer (pH 9.0).



Immunohistochemical analysis of paraffin-embedded human kidney tissue slide using 29372-1-AP (SLC6A19 antibody) at dilution of 1:200 (under 40x lens). Heat mediated antigen retrieval with Tris-EDTA buffer (pH 9.0).



Various lysates were subjected to SDS PAGE followed by western blot with 29372-1-AP (SLC6A19 antibody) at dilution of 1:2000 incubated at room temperature for 1.5 hours.



Immunohistochemical analysis of paraffin-embedded human small intestine tissue slide using 29372-1-AP (SLC6A19 antibody) at dilution of 1:200 (under 40x lens).