

For Research Use Only

EHBP1L1 Polyclonal antibody

Catalog Number: 29383-1-AP



Basic Information

Catalog Number: 29383-1-AP	GenBank Accession Number: NM_001099409	Purification Method: Antigen affinity purification
Size: 150ul , Concentration: 950 ug/ml by Nanodrop;	GeneID (NCBI): 254102	Recommended Dilutions: WB: 1:500-1:2000
Source: Rabbit	UNIPROT ID: Q8N3D4	
Isotype: IgG	Full Name: EH domain binding protein 1-Like 1	
Immunogen Catalog Number: AG29796	Calculated MW: 162 kDa	
	Observed MW: 162 kDa	

Applications

Tested Applications: WB, ELISA	Positive Controls: WB : mouse testis tissue, rat testis tissue
Species Specificity: human, mouse, rat	

Background Information

EHBP1L1 is an adapter protein localized on recycling endosomes. It regulates apical-directed transport in polarized epithelial cells. Additionally, EHBP1L1 is crucial for erythroblast enucleation by promoting nuclear polarization in coordination with Rab10, Bin1, and dynamin. It also maintains the proper morphology and structural stability of erythrocytes.

Storage

Storage:
Store at -20°C. Stable for one year after shipment.
Storage Buffer:
PBS with 0.02% sodium azide and 50% glycerol, pH7.3
Aliquoting is unnecessary for -20°C storage

*** 20ul sizes contain 0.1% BSA

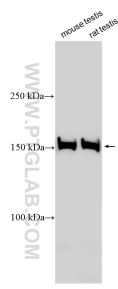
For technical support and original validation data for this product please contact:

T: 1 (888) 4PTGLAB (1-888-478-4522) (toll free in USA), or 1(312) 455-8498 (outside USA)

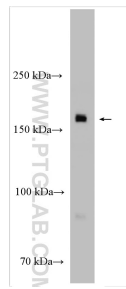
E: proteintech@ptglab.com
W: ptglab.com

This product is exclusively available under Proteintech Group brand and is not available to purchase from any other manufacturer.

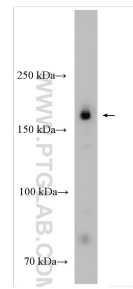
Selected Validation Data



Various lysates were subjected to SDS PAGE followed by western blot with 29383-1-AP (EHP1L1 antibody) at dilution of 1:3000 incubated at room temperature for 1.5 hours.



rat testis tissue were subjected to SDS PAGE followed by western blot with 29383-1-AP (EHP1L1 antibody) at dilution of 1:1000 incubated at room temperature for 1.5 hours.



mouse testis tissue were subjected to SDS PAGE followed by western blot with 29383-1-AP (EHP1L1 antibody) at dilution of 1:1000 incubated at room temperature for 1.5 hours.