

For Research Use Only

EHBP1L1 Polyclonal antibody, PBS Only

Catalog Number: 29383-1-PBS



Basic Information

Catalog Number: 29383-1-PBS	GenBank Accession Number: NM_001099409	Purification Method: Antigen affinity purification
Size: 100ug , Concentration: 1 mg/ml by Nanodrop;	GeneID (NCBI): 254102	
Source: Rabbit	UNIPROT ID: Q8N3D4	
Isotype: IgG	Full Name: EH domain binding protein 1-Like 1	
Immunogen Catalog Number: AG29796	Calculated MW: 162 kDa	
	Observed MW: 162 kDa	

Applications

Tested Applications:
WB, Indirect ELISA

Species Specificity:
human, mouse, rat

Background Information

EHBP1L1 is an adapter protein localized on recycling endosomes. It regulates apical-directed transport in polarized epithelial cells. Additionally, EHBP1L1 is crucial for erythroblast enucleation by promoting nuclear polarization in coordination with Rab10, Bin1, and dynamin. It also maintains the proper morphology and structural stability of erythrocytes.

Storage

Storage:
Store at -80°C.

Storage Buffer:
PBS only, pH7.3

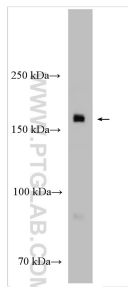
For technical support and original validation data for this product please contact:

T: 1 (888) 4PTGLAB (1-888-478-4522) (toll free in USA), or 1(312) 455-8498 (outside USA)

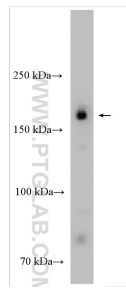
E: proteintech@ptglab.com
W: ptglab.com

This product is exclusively available under Proteintech Group brand and is not available to purchase from any other manufacturer.

Selected Validation Data



rat testis tissue were subjected to SDS PAGE followed by western blot with 29383-1-AP (EHBP1L1 antibody) at dilution of 1:1000 incubated at room temperature for 1.5 hours. This data was developed using the same antibody clone with 29383-1-PBS in a different storage buffer formulation.



mouse testis tissue were subjected to SDS PAGE followed by western blot with 29383-1-AP (EHBP1L1 antibody) at dilution of 1:1000 incubated at room temperature for 1.5 hours. This data was developed using the same antibody clone with 29383-1-PBS in a different storage buffer formulation.