

For Research Use Only

# AQP2 Polyclonal antibody

Catalog Number: 29386-1-AP

2 Publications



## Basic Information

<b>Catalog Number:</b> 29386-1-AP	<b>GenBank Accession Number:</b> NM_000486	<b>Purification Method:</b> Antigen affinity purification
<b>Size:</b> 150ul , Concentration: 600 ug/ml by Nanodrop;	<b>GeneID (NCBI):</b> 359	<b>Recommended Dilutions:</b> WB 1:500-1:2000
<b>Source:</b> Rabbit	<b>UNIPROT ID:</b> P41181	IHC 1:500-1:2000
<b>Isotype:</b> IgG	<b>Full Name:</b> aquaporin 2 (collecting duct)	IF-P 1:50-1:500
<b>Immunogen Catalog Number:</b> AG29931	<b>Calculated MW:</b> 29 kDa	IF-Fro 1:200-1:800
	<b>Observed MW:</b> 28-29, 35-38 kDa	

## Applications

<b>Tested Applications:</b> WB, IHC, IF-P, IF-Fro, ELISA	<b>Positive Controls:</b> WB : 37°C incubated mouse kidney tissue,
<b>Cited Applications:</b> WB, IHC, IF	IHC : mouse kidney tissue, human kidney tissue
<b>Species Specificity:</b> human, mouse	IF-P : mouse kidney tissue,
<b>Cited Species:</b> mouse	IF-Fro : mouse kidney tissue,
<b>Note-IHC: suggested antigen retrieval with TE buffer pH 9.0; (*) Alternatively, antigen retrieval may be performed with citrate buffer pH 6.0</b>	

## Background Information

AQP2 (Aquaporin2) is a water channel protein that is widely distributed among mammalian tissues and plays a major role in water homeostasis. AQP2 is mainly found in the apical cell membranes of the kidney's collecting duct cells and is critical for urinary concentration. AQP2 can be glycosylated and this antibody recognizes the 28-29 kDa non-glycosylated as well as the 35-40 kDa glycosylated forms of AQP2.

## Notable Publications

Author	Pubmed ID	Journal	Application
Bo Pang	39781606	FASEB J	WB, IF
Yongzhan Sun	39567834	EMBO Mol Med	IHC

## Storage

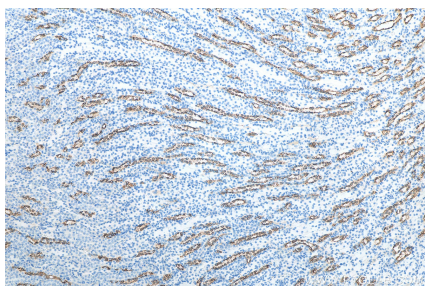
**Storage:**  
Store at -20°C. Stable for one year after shipment.  
**Storage Buffer:**  
PBS with 0.02% sodium azide and 50% glycerol, pH7.3  
Aliquoting is unnecessary for -20°C storage

\*\*\* 20ul sizes contain 0.1% BSA

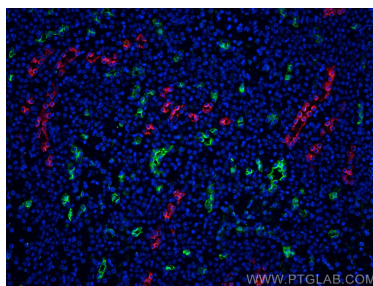
For technical support and original validation data for this product please contact:  
T: 1 (888) 4PTGLAB (1-888-478-4522) (toll free in USA), or 1(312) 455-8498 (outside USA)  
E: proteintech@ptglab.com  
W: ptglab.com

This product is exclusively available under Proteintech Group brand and is not available to purchase from any other manufacturer.

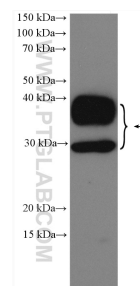
## Selected Validation Data



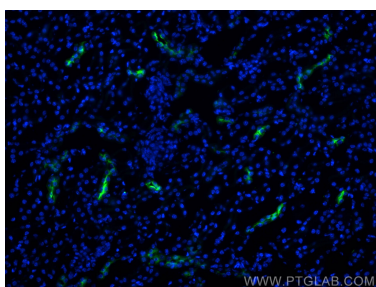
Immunohistochemical analysis of paraffin-embedded mouse kidney tissue slide using 29386-1-AP (AQP2 antibody) at dilution of 1:1000 (under 10x lens). Heat mediated antigen retrieval with Tris-EDTA buffer (pH 9.0).



Immunofluorescent analysis of (4% PFA) fixed mouse kidney tissue using AQP2 antibody (29386-1-AP) at dilution of 1:200 and CoraLite®594-Conjugated AffiniPure Goat Anti-Rabbit IgG(H+L), AQP1 antibody (66805-1-Ig, Clone: 2E5D6, green).



37°C incubated mouse kidney tissue were subjected to SDS PAGE followed by western blot with 29386-1-AP (AQP2 antibody) at dilution of 1:1000 incubated at room temperature for 1.5 hours.



Immunofluorescent analysis of (4% PFA) fixed frozen OCT-embedded mouse kidney tissue using AQP2 antibody (29386-1-AP) at dilution of 1:400 and CoraLite®488-Conjugated AffiniPure Goat Anti-Rabbit IgG(H+L).