

For Research Use Only

RAD50 Polyclonal antibody, PBS Only

Catalog Number: 29390-1-PBS

Featured Product



Basic Information

Catalog Number:

29390-1-PBS

Size:

100ug, Concentration: 1 mg/ml by Nanodrop;

Source:

Rabbit

Isotype:

IgG

Immunogen Catalog Number:

AG29949

GenBank Accession Number:

NM_005732

GeneID (NCBI):

10111

UNIPROT ID:

Q92878

Full Name:

RAD50 homolog (*S. cerevisiae*)

Calculated MW:

154 kDa

Observed MW:

154 kDa

Purification Method:

Antigen affinity purification

Applications

Tested Applications:

WB, IHC, IF/ICC, IF-P, Indirect ELISA

Species Specificity:

human, mouse, rat

Background Information

RAD50 belongs to the ABC-ATPase protein family that concurs in forming the Nucleotide Binding Domain (NBD). ATP binding to Rad50 induces a conformational change that dramatically increases the Rad50 NBD affinity for itself, allowing for its dimerization (PMID: 37569756). The Mre11-Rad50 (MR) complex has key functions in the detection, signaling and repair of DNA breaks (PMID: 35501303).

Storage

Storage:

Store at -80°C.

Storage Buffer:

PBS only, pH7.3

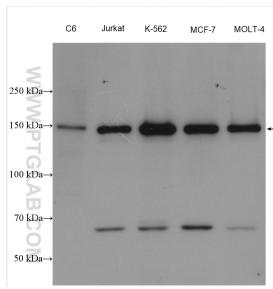
For technical support and original validation data for this product please contact:

T: 1 (888) 4PTGLAB (1-888-478-4522) (toll free in USA), or 1(312) 455-8498 (outside USA)

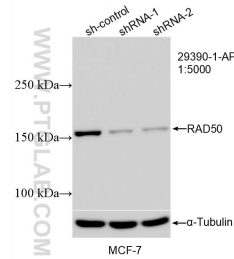
E: proteintech@ptglab.com
W: ptglab.com

This product is exclusively available under Proteintech Group brand and is not available to purchase from any other manufacturer.

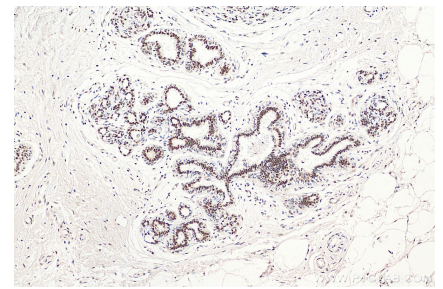
Selected Validation Data



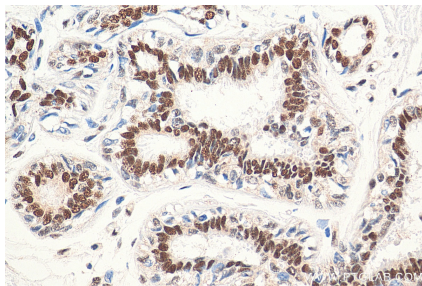
Various lysates were subjected to SDS PAGE followed by western blot with 29390-1-AP (RAD50 antibody) at dilution of 1:5000 incubated at room temperature for 1.5 hours. This data was developed using the same antibody clone with 29390-1-PBS in a different storage buffer formulation.



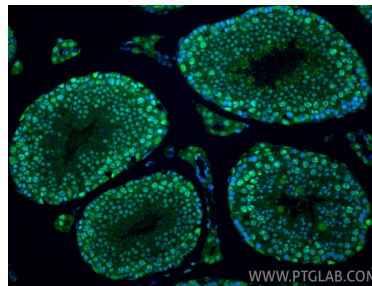
WB result of RAD50 antibody (29390-1-AP; 1:5000; incubated at room temperature for 1.5 hours) with sh-Control and sh-RAD50 transfected MCF-7 cells. This data was developed using the same antibody clone with 29390-1-PBS in a different storage buffer formulation.



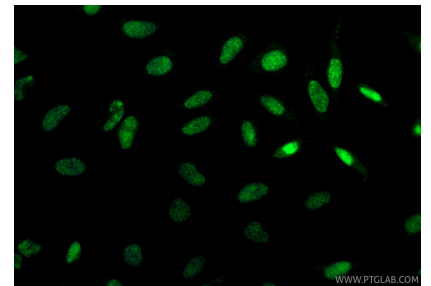
Immunohistochemical analysis of paraffin-embedded human breast cancer tissue slide using 29390-1-AP (RAD50 antibody) at dilution of 1:800 (under 10x lens). Heat mediated antigen retrieval with Tris-EDTA buffer (pH 9.0). This data was developed using the same antibody clone with 29390-1-PBS in a different storage buffer formulation.



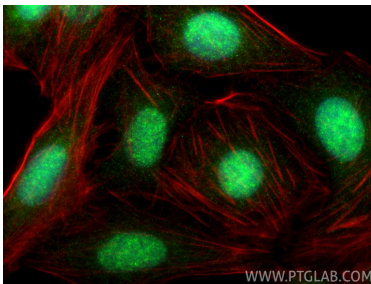
Immunohistochemical analysis of paraffin-embedded human breast cancer tissue slide using 29390-1-AP (RAD50 antibody) at dilution of 1:800 (under 40x lens). Heat mediated antigen retrieval with Tris-EDTA buffer (pH 9.0). This data was developed using the same antibody clone with 29390-1-PBS in a different storage buffer formulation.



Immunofluorescent analysis of (4% PFA) fixed paraffin-embedded mouse testis tissue using RAD50 antibody (29390-1-AP) at dilution of 1:200 and CoraLite@488-Conjugated Goat Anti-Rabbit IgG(H+L) (SA00013-2). Heat mediated antigen retrieval with Tris-EDTA buffer (pH 9.0). This data was developed using the same antibody clone with 29390-1-PBS in a different storage buffer formulation.



Immunofluorescent analysis of (4% PFA) fixed HeLa cells using RAD50 antibody (29390-1-AP) at dilution of 1:400 and CoraLite@488-Conjugated Goat Anti-Rabbit IgG(H+L) (SA00013-2). This data was developed using the same antibody clone with 29390-1-PBS in a different storage buffer formulation.



Immunofluorescent analysis of (4% PFA) fixed U2OS cells using RAD50 antibody (29390-1-AP) at dilution of 1:400 and CoraLite@488-Conjugated Goat Anti-Rabbit IgG(H+L) (SA00013-2), CL594-phalloidin (red). This data was developed using the same antibody clone with 29390-1-PBS in a different storage buffer formulation.