

For Research Use Only

ATP8 Polyclonal antibody

Catalog Number: 29398-1-AP

Featured Product



Basic Information

Catalog Number:

29398-1-AP

Size:

150ul , Concentration: 1000 ug/ml by Nanodrop;

Source:

Rabbit

Isotype:

IgG

Immunogen Catalog Number:

AG30024

GenBank Accession Number:

GeneID (NCBI):

4509

UNIPROT ID:

P03928

Full Name:

ATP synthase 8; ATPase subunit 8

Calculated MW:

8 kDa

Observed MW:

8-10 kDa

Purification Method:

Antigen affinity purification

Recommended Dilutions:

WB 1:500-1:1000

Applications

Tested Applications:

WB, ELISA

Species Specificity:

human

Positive Controls:

WB : HEK-293 cells, 143B cells, HepG2 cells

Storage

Storage:

Store at -20°C. Stable for one year after shipment.

Storage Buffer:

PBS with 0.02% sodium azide and 50% glycerol pH 7.3.

Aliquoting is unnecessary for -20°C storage

*** 20ul sizes contain 0.1% BSA

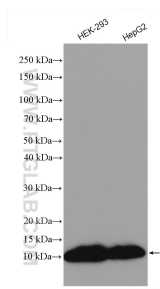
For technical support and original validation data for this product please contact:

T: 1 (888) 4PTGLAB (1-888-478-4522) (toll free in USA), or 1(312) 455-8498 (outside USA)

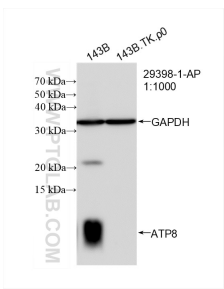
E: proteintech@ptglab.com
W: ptglab.com

This product is exclusively available under Proteintech Group brand and is not available to purchase from any other manufacturer.

Selected Validation Data



Various lysates were subjected to SDS PAGE followed by western blot with 29398-1-AP (MT-ATP8 antibody) at dilution of 1:600 incubated at room temperature for 1.5 hours.



WB result of ATP8 antibody (ATP8; 1:1000; incubated at room temperature for 1.5 hours) with 143B and 143B.TK.p0 cell. 143B is wild-type cell line, 143B.TK.p0 is mtDNA deletion cell line.