

For Research Use Only

Fibrillin 1 Polyclonal antibody

Catalog Number: 29425-1-AP



Basic Information

Catalog Number: 29425-1-AP	GenBank Accession Number: BC146854	Purification Method: Antigen affinity purification
Size: 150ul , Concentration: 450 µg/ml by Nanodrop;	GeneID (NCBI): 2200	Recommended Dilutions: WB 1:500-1:2000 IHC 1:50-1:500 IF 1:200-1:800
Source: Rabbit	UNIPROT ID: P35555	
Isotype: IgG	Full Name: fibrillin 1	
Immunogen Catalog Number: AG30283	Observed MW: 350 kDa	

Applications

Tested Applications: IF, IHC, WB, ELISA	Positive Controls: WB : HeLa cells, IHC : human endometrial cancer tissue, IF : A431 cells,
Species Specificity: Human	
Note-IHC: suggested antigen retrieval with TE buffer pH 9.0; (*) Alternatively, antigen retrieval may be performed with citrate buffer pH 6.0	

Background Information

Fibrillin 1 is a 350 kDa large extracellular matrix glycoprotein that formed thread-like microfibril filaments, which provided structural support for tissues, formed elastic fibers in the skin and vessels, regulated the availability of the transforming growth factor beta (TGF-β) protein, and modulated the microenvironment. Fibrillin 1 contains a large number of cysteine-rich epidermal growth factor (EGF)- like domains, most capable of binding calcium ions (cbEGF-like), and a few motifs homologous to the binding protein for transforming growth factor beta (TGFβ1-BP)- like module (PMID: 29220879, PMID: 35234370).

Storage

Storage:
Store at -20°C. Stable for one year after shipment.
Storage Buffer:
PBS with 0.02% sodium azide and 50% glycerol pH 7.3.
Aliquoting is unnecessary for -20°C storage

*** 20ul sizes contain 0.1% BSA

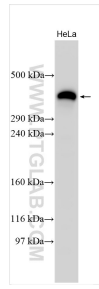
For technical support and original validation data for this product please contact:

T: 1 (888) 4PTGLAB (1-888-478-4522) (toll free in USA), or 1(312) 455-8498 (outside USA)

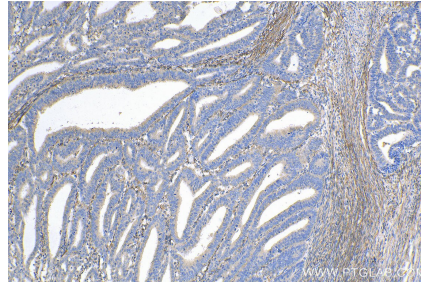
E: proteintech@ptglab.com
W: ptglab.com

This product is exclusively available under Proteintech Group brand and is not available to purchase from any other manufacturer.

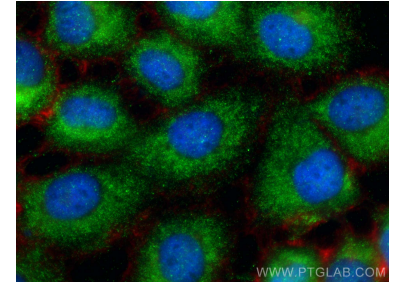
Selected Validation Data



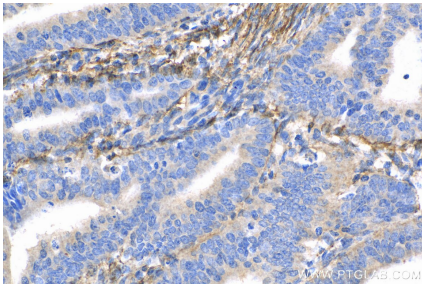
HeLa cells were subjected to Tris-acetate gel system followed by western blot with 29425-1-AP (Fibrillin 1 antibody) at dilution of 1:1000 incubated at room temperature for 1.5 hours.



Immunohistochemical analysis of paraffin-embedded human endometrial cancer tissue slide using 29425-1-AP (Fibrillin 1 antibody) at dilution of 1:200 (under 10x lens). Heat mediated antigen retrieval with Tris-EDTA buffer (pH 9.0).



Immunofluorescent analysis of (-20°C Ethanol) fixed A431 cells using Fibrillin 1 antibody (29425-1-AP) at dilution of 1:400 and Coralite@488-Conjugated AffiniPure Goat Anti-Rabbit IgG(H+L) (SA00013-2), CL594-phalloidin (red).



Immunohistochemical analysis of paraffin-embedded human endometrial cancer tissue slide using 29425-1-AP (Fibrillin 1 antibody) at dilution of 1:200 (under 40x lens). Heat mediated antigen retrieval with Tris-EDTA buffer (pH 9.0).