

For Research Use Only

# YTHDC1 Polyclonal antibody

Catalog Number: 29441-1-AP

Featured Product

14 Publications



## Basic Information

### Catalog Number:

29441-1-AP

### Size:

150ul, Concentration: 750 ug/ml by Nanodrop;

### Source:

Rabbit

### Isotype:

IgG

### Immunogen Catalog Number:

AG31459

### GenBank Accession Number:

BC053863

### GeneID (NCBI):

91746

### UNIPROT ID:

Q96MU7

### Full Name:

YTH domain containing 1

### Calculated MW:

85 kDa

### Observed MW:

~100 kDa

### Purification Method:

Antigen affinity purification

### Recommended Dilutions:

WB 1:5000-1:50000

IP 0.5-4.0 ug for 1.0-3.0 mg of total protein lysate

IHC 1:50-1:500

## Applications

### Tested Applications:

WB, IP, IHC, ELISA

### Cited Applications:

WB, IHC, IF, IP, RIP

### Species Specificity:

Human, mouse, rat

### Cited Species:

human, mouse

**Note-IHC: suggested antigen retrieval with TE buffer pH 9.0; (\*) Alternatively, antigen retrieval may be performed with citrate buffer pH 6.0**

### Positive Controls:

**WB**: HEK-293 cells, HepG2 cells, HSC-T6 cells, NIH/3T3 cells, MDA-MB-231 cells

**IP**: HEK-293 cells,

**IHC**: human colon cancer tissue,

## Background Information

YTHDC1, containing 1 YTH domain, is one of the m6A-binding proteins that can recognize and bind to the m6A methylation site and plays a specific role in gene expression. YTHDC1 is constitutively enriched in the nucleus. It regulates mRNA splicing by bridging the interactions between the trans- and cis-regulatory elements to bind targeted mRNAs. YTHDC1 mediates the export of m6A modified mRNA from the nucleus to the cytoplasm by interacting with SRSF3, which is an essential factor driving the tumorigenic process in various types of cancers including breast cancer, colon cancer, ovarian cancer, osteosarcoma, and glioblastoma (32368386).

## Notable Publications

| Author            | Pubmed ID | Journal         | Application |
|-------------------|-----------|-----------------|-------------|
| Kusuma Suphakhong | 36183833  | J Biol Chem     | WB          |
| Zhenwei Li        | 34825733  | J Clin Lab Anal | WB          |
| Fanhua Kong       | 36434140  | Discov Oncol    | WB          |

## Storage

### Storage:

Store at -20°C. Stable for one year after shipment.

### Storage Buffer:

PBS with 0.02% sodium azide and 50% glycerol pH 7.3.

Aliquoting is unnecessary for -20°C storage

\*\*\* 20ul sizes contain 0.1% BSA

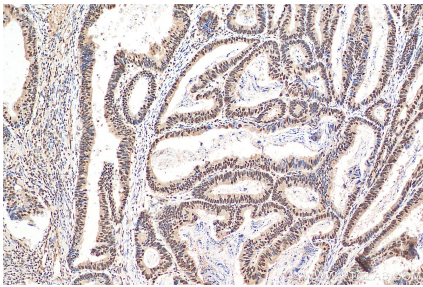
For technical support and original validation data for this product please contact:

T: 1 (888) 4PTGLAB (1-888-478-4522) (toll free in USA), or 1(312) 455-8498 (outside USA)

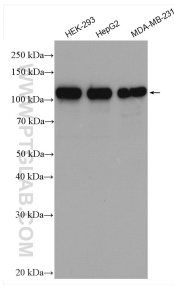
E: proteintech@ptglab.com  
W: ptglab.com

This product is exclusively available under Proteintech Group brand and is not available to purchase from any other manufacturer.

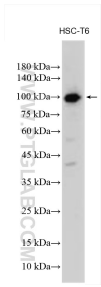
Selected Validation Data



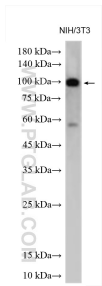
Immunohistochemical analysis of paraffin-embedded human colon cancer tissue slide using 29441-1-AP (YTHDC1 antibody) at dilution of 1:200 (under 10x lens). Heat mediated antigen retrieval with Tris-EDTA buffer (pH 9.0).



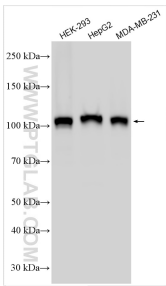
Various lysates were subjected to SDS PAGE followed by western blot with 29441-1-AP (YTHDC1 antibody) at dilution of 1:5000 incubated at room temperature for 1.5 hours.



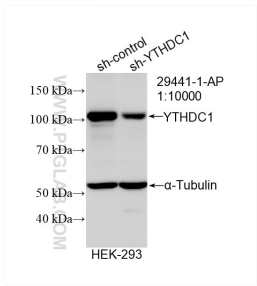
Various lysates were subjected to SDS PAGE followed by western blot with 29441-1-AP (YTHDC1 antibody) at dilution of 1:5000 incubated at room temperature for 1.5 hours.



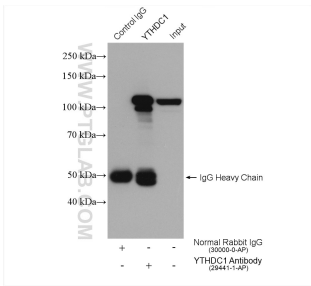
Various lysates were subjected to SDS PAGE followed by western blot with 29441-1-AP (YTHDC1 antibody) at dilution of 1:5000 incubated at room temperature for 1.5 hours.



Various lysates were subjected to SDS PAGE followed by western blot with 29441-1-AP (YTHDC1 antibody) at dilution of 1:10000 incubated at room temperature for 1.5 hours.



WB result of YTHDC1 antibody (29441-1-AP; 1:10000; incubated at room temperature for 1.5 hours) with sh-Control and sh-YTHDC1 transfected HEK-293 cells.



IP result of anti-YTHDC1 (IP:29441-1-AP, 4ug; Detection:29441-1-AP 1:2000) with HEK-293 cells lysate 1800 ug.