

For Research Use Only

IL-6 Polyclonal antibody

Catalog Number: 29444-1-AP



Basic Information

Catalog Number: 29444-1-AP	GenBank Accession Number: NM_031168	Purification Method: Antigen affinity purification
Size: 150ul , Concentration: 650 ug/ml by Nanodrop;	GeneID (NCBI): 16193	Recommended Dilutions: WB 1:500-1:2000
Source: Rabbit	Full Name: interleukin 6	
Isotype: IgG	Calculated MW: 24 kDa	
	Observed MW: 24 kDa	

Applications

Tested Applications: WB, ELISA	Positive Controls: WB : LPS treated RAW 264.7 cells,
Species Specificity: mouse	

Background Information

Interleukin-6 (IL-6) is an interleukin that acts as both a pro-inflammatory and anti-inflammatory cytokine. IL-6 protein is secreted by a variety of cell types including T cells and macrophages as phosphorylated and variably glycosylated molecule. IL-6 plays an essential role in the final differentiation of B-cells into Ig-secreting cells involved in lymphocyte and monocyte differentiation. It induces myeloma and plasmacytoma growth and induces nerve cells differentiation. Acts on B-cells, T-cells, hepatocytes, hematopoietic progenitor cells and cells of the CNS. IL-6 is also considered a myokine, a cytokine produced from muscle, and is elevated in response to muscle contraction. IL-6 has been shown to interact with interleukin-6 receptor and glycoprotein 130. Additionally, IL-6 is involved in hematopoiesis, bone metabolism, and cancer progression, and has been defined an essential role in directing transition from innate to acquired immunity.

Storage

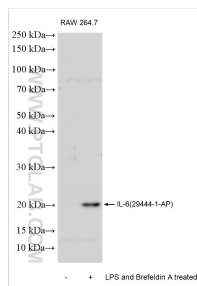
Storage:
Store at -20°C. Stable for one year after shipment.
Storage Buffer:
PBS with 0.02% sodium azide and 50% glycerol pH 7.3.
Aliquoting is unnecessary for -20°C storage

*** 20ul sizes contain 0.1% BSA

For technical support and original validation data for this product please contact:
T: 1 (888) 4PTGLAB (1-888-478-4522) (toll free in USA), or 1(312) 455-8498 (outside USA)
E: proteintech@ptglab.com
W: ptglab.com

This product is exclusively available under Proteintech Group brand and is not available to purchase from any other manufacturer.

Selected Validation Data



LPS and Brefeldin A treated RAW 264.7 cells were subjected to SDS PAGE followed by western blot with 29444-1-AP (IL-6 antibody) at dilution of 1:1000 incubated at room temperature for 1.5 hours.