

For Research Use Only

# BRCA2 Polyclonal antibody

Catalog Number: 29450-1-AP

7 Publications



## Basic Information

Catalog Number:

29450-1-AP

Size:

150ul, Concentration: 1300 ug/ml by 675

Nanodrop;

Source:

Rabbit

Isotype:

IgG

Immunogen Catalog Number:

AG31064

GenBank Accession Number:

NM\_000059

GeneID (NCBI):

675

UNIPROT ID:

P51587

Full Name:

breast cancer 2, early onset

Calculated MW:

384 kDa

Observed MW:

384 kDa

Purification Method:

Antigen affinity purification

Recommended Dilutions:

WB 1:1000-1:8000

## Applications

Tested Applications:

WB, ELISA

Cited Applications:

WB

Species Specificity:

Human

Cited Species:

human

Positive Controls:

WB : HeLa cells, HepG2 cells, MCF-7 cells

## Background Information

BRCA2, also named as FACD and FANCD1, is involved in double-strand break repair and/or homologous recombination. BRCA2 may participate in S phase checkpoint activation. Defects in BRCA2 are a cause of genetic susceptibility to breast cancer (BC) which also called susceptibility to familial breast-ovarian cancer type 2 (BROVCA2).

## Notable Publications

Author	Pubmed ID	Journal	Application
Taihao Chang	36576015	Prostate	WB
Wei Huang	39619421	Oncol Lett	WB
Leyuan Chen	39072709	J Enzyme Inhib Med Chem	WB

## Storage

Storage:

Store at -20°C.

Storage Buffer:

PBS with 0.02% sodium azide and 50% glycerol pH 7.3.

Aliquoting is unnecessary for -20°C storage

\*\*\* 20ul sizes contain 0.1% BSA

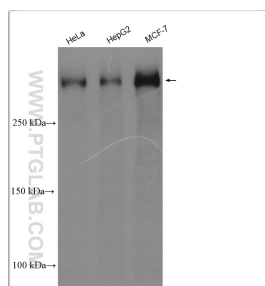
For technical support and original validation data for this product please contact:

T: 1 (888) 4PTGLAB (1-888-478-4522) (toll free in USA), or 1(312) 455-8498 (outside USA)

E: [proteintech@ptglab.com](mailto:proteintech@ptglab.com)  
W: [ptglab.com](http://ptglab.com)

This product is exclusively available under Proteintech Group brand and is not available to purchase from any other manufacturer.

## Selected Validation Data



Various lysates were subjected to SDS PAGE followed by western blot with 29450-1-AP (BRCA2 antibody) at dilution of 1:4000 incubated at room temperature for 1.5 hours.