

For Research Use Only

ERAL1 Polyclonal antibody

Catalog Number: 29465-1-AP



Basic Information

Catalog Number: 29465-1-AP	GenBank Accession Number: BC019094	Purification Method: Antigen affinity purification
Size: 150ul , Concentration: 500 ug/ml by Nanodrop;	GeneID (NCBI): 26284	Recommended Dilutions: WB 1:1000-1:8000 IHC 1:400-1:1600
Source: Rabbit	UNIPROT ID: O75616	
Isotype: IgG	Full Name: Era G-protein-like 1 (E. coli)	
Immunogen Catalog Number: AG30720	Calculated MW: 437 aa, 48 kDa	
	Observed MW: 40-45 kDa	

Applications

Tested Applications: WB, IHC, ELISA	Positive Controls: WB : HEK-293T cells, K-562 cells
Species Specificity: Human	IHC : human colon tissue, human kidney tissue

Note-IHC: suggested antigen retrieval with TE buffer pH 9.0; (*) Alternatively, antigen retrieval may be performed with citrate buffer pH 6.0

Background Information

ERAL1, a homologue of Era protein in Escherichia coli, is a member of conserved GTP-binding proteins with RNA-binding activity. ERAL1 localizes to the mitochondrionmitoribosomal subunit, and binds to the 3' terminal stem loop of 12S mitochondrial rRNA and is required for proper assembly of the 28S small mitochondrial ribosomal subunit. Deletion of ERAL1 has been shown to cause mitochondrial dysfunction, growth retardation, and apoptosis.

Storage

Storage:
Store at -20°C.
Storage Buffer:
PBS with 0.02% sodium azide and 50% glycerol pH 7.3.
Aliquoting is unnecessary for -20°C storage

*** 20ul sizes contain 0.1% BSA

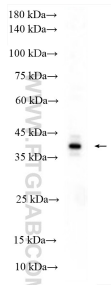
For technical support and original validation data for this product please contact:

T: 1 (888) 4PTGLAB (1-888-478-4522) (toll free in USA), or 1(312) 455-8498 (outside USA)

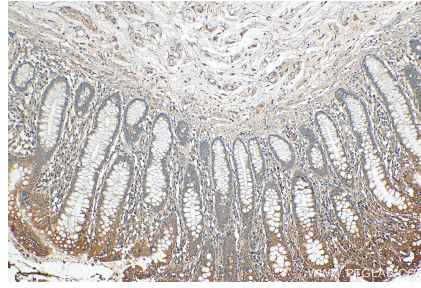
E: proteintech@ptglab.com
W: ptglab.com

This product is exclusively available under Proteintech Group brand and is not available to purchase from any other manufacturer.

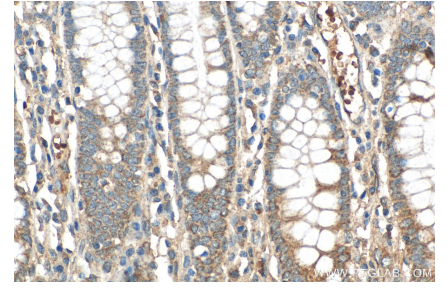
Selected Validation Data



HEK-293T cells were subjected to SDS PAGE followed by western blot with 29465-1-AP (ERAL1 antibody) at dilution of 1:4000 incubated at room temperature for 1.5 hours.



Immunohistochemical analysis of paraffin-embedded human colon tissue slide using 29465-1-AP (ERAL1 antibody) at dilution of 1:800 (under 10x lens). Heat mediated antigen retrieval with Tris-EDTA buffer (pH 9.0).



Immunohistochemical analysis of paraffin-embedded human colon tissue slide using 29465-1-AP (ERAL1 antibody) at dilution of 1:800 (under 40x lens). Heat mediated antigen retrieval with Tris-EDTA buffer (pH 9.0).