

For Research Use Only

# FOLR1 Polyclonal antibody

Catalog Number: 29472-1-AP



## Basic Information

<b>Catalog Number:</b> 29472-1-AP	<b>GenBank Accession Number:</b> BC002947	<b>Purification Method:</b> Antigen affinity purification
<b>Size:</b> 150ul , Concentration: 1000 µg/ml by Nanodrop;	<b>GeneID (NCBI):</b> 2348	<b>Recommended Dilutions:</b> WB 1:2000-1:10000
<b>Source:</b> Rabbit	<b>Full Name:</b> folate receptor 1 (adult)	
<b>Isotype:</b> IgG	<b>Calculated MW:</b> 257 aa, 30 kDa	
	<b>Observed MW:</b> 36-38 kDa	

## Applications

<b>Tested Applications:</b> WB, ELISA	<b>Positive Controls:</b> WB : HeLa cells, mouse kidney tissue, rat kidney tissue
<b>Species Specificity:</b> Human, Mouse, Rat	

## Background Information

Folate receptor 1 (FOLR1), also known as folate receptor alpha or adult folate-binding protein (FBP), is a 38-kDa glycoprotein belonging to the folate receptor family (PMID:15094207; 23528302). The receptor binds to folate and reduced folic acid derivatives and mediates delivery of 5-methyltetrahydrofolate to the interior of cells. FOLR1 is a secreted protein that either anchors to membranes via a glycosyl-phosphatidylinositol linkage or exists in a soluble form. FOLR1 expression is often limited to the apical surfaces of epithelium in the lung, kidney and choroid plexus but is differentially overexpressed in a variety of solid tumors such as ovarian cancer, non-small cell lung cancer, breast cancer, kidney cancer and high-grade osteosarcoma (PMID: 23528302; 23357463).

## Storage

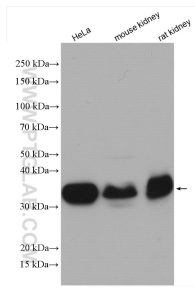
**Storage:**  
Store at -20°C.  
**Storage Buffer:**  
PBS with 0.02% sodium azide and 50% glycerol pH 7.3.  
Aliquoting is unnecessary for -20°C storage

\*\*\* 20ul sizes contain 0.1% BSA

For technical support and original validation data for this product please contact:  
T: 1 (888) 4PTGLAB (1-888-478-4522) (toll free in USA), or 1(312) 455-8498 (outside USA) E: proteintech@ptglab.com W: ptglab.com

This product is exclusively available under Proteintech Group brand and is not available to purchase from any other manufacturer.

## Selected Validation Data



HeLa cells were subjected to SDS PAGE followed by western blot with 29472-1-AP (FOLR1 antibody) at dilution of 1:5000 incubated at room temperature for 1.5 hours.