

For Research Use Only

WEE1 Polyclonal antibody

Catalog Number: 29474-1-AP **4 Publications**



Basic Information

| | | |
|---|--|--|
| Catalog Number: 29474-1-AP | GenBank Accession Number: BC051831 | Purification Method: Antigen affinity purification |
| Size: 150ul , Concentration: 450 µg/ml by Nanodrop; | GeneID (NCBI): 7465 | Recommended Dilutions: WB 1:500-1:2000 |
| Source: Rabbit | Full Name: WEE1 homolog (S. pombe) | |
| Isotype: IgG | Calculated MW: 72 kDa | |
| Immunogen Catalog Number: AG30194 | Observed MW: 72 kDa, 110 kDa | |

Applications

| | |
|---|---|
| Tested Applications: WB, ELISA | Positive Controls: WB : K-562 cells, mouse brain tissue, mouse heart tissue |
| Cited Applications: IF, WB | |
| Species Specificity: Human, mouse | |
| Cited Species: human, mouse | |

Background Information

WEE1 kinase is a serine-threonine kinase that regulates G2/M checkpoint transition. WEE1 triggers G2/M arrest through inhibitory phosphorylation on Tyr15 of CDK1 (Cdc2) and preventing entry into mitosis to allow DNA repair during DNA damage (PMID: 27427153). The predicted native molecular weight for Wee1 based on the intact human Wee1 cDNA sequence is 72 kDa, whereas the 95-110 kDa protein is a highly modified product (PMID: 7568188). Others have shown that Wee1 is 70-72 kDa and 49-55 kDa (PMID: 12214061).

Notable Publications

| Author | Pubmed ID | Journal | Application |
|-------------|-----------|-------------------------|-------------|
| Hanxi Yu | 35355406 | J Cell Mol Med | WB |
| Jianwu Gong | 35127343 | Anal Cell Pathol (Amst) | WB |
| Yi-Ming Ji | 35504548 | Reprod Toxicol | WB |

Storage

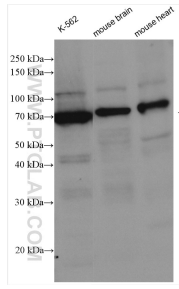
Storage:
Store at -20°C.
Storage Buffer:
PBS with 0.02% sodium azide and 50% glycerol pH 7.3.
Aliquoting is unnecessary for -20°C storage

***** 20ul sizes contain 0.1% BSA**

For technical support and original validation data for this product please contact:
T: 1 (888) 4PTGLAB (1-888-478-4522) (toll free in USA), or 1(312) 455-8498 (outside USA) E: proteintech@ptglab.com W: ptglab.com

This product is exclusively available under Proteintech Group brand and is not available to purchase from any other manufacturer.

Selected Validation Data



Various lysates were subjected to SDS PAGE followed by western blot with 29474-1-AP (WEE1 antibody) at dilution of 1:1000 incubated at room temperature for 1.5 hours.