

For Research Use Only

COQ10A Polyclonal antibody

Catalog Number: 29496-1-AP



Basic Information

Catalog Number:

29496-1-AP

Size:

150ul, Concentration: 500 µg/ml by Nanodrop;

Source:

Rabbit

Isotype:

IgG

Immunogen Catalog Number:

AG31534

GenBank Accession Number:

NM_144576

GeneID (NCBI):

93058

UNIPROT ID:

Q96MF6

Full Name:

coenzyme Q10 homolog A (S. cerevisiae)

Calculated MW:

28KD

Observed MW:

20 kDa

Purification Method:

Antigen affinity purification

Recommended Dilutions:

WB 1:5000-1:50000

Applications

Tested Applications:

WB, ELISA

Species Specificity:

human, mouse, rat

Positive Controls:

WB : mouse heart tissue, mouse skeletal muscle tissue, rat heart tissue, rat skeletal muscle tissue

Background Information

COQ10A is a human gene that encodes a protein involved in the biosynthesis of coenzyme Q10 (CoQ10), also known as ubiquinone. CoQ10 is a lipid-soluble antioxidant and a critical component of the mitochondrial electron transport chain, where it plays a key role in cellular energy production (ATP synthesis). Mutations or deficiencies in COQ10A have been implicated in primary CoQ10 deficiency syndromes, which can manifest as mitochondrial disorders such as encephalomyopathy, nephropathy, and Leigh syndrome.

Storage

Storage:

Store at -20°C. Stable for one year after shipment.

Storage Buffer:

PBS with 0.02% sodium azide and 50% glycerol

Aliquoting is unnecessary for -20°C storage

*** 20ul sizes contain 0.1% BSA

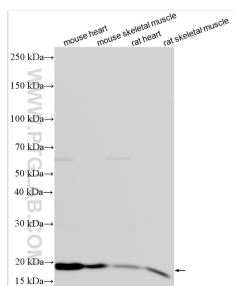
For technical support and original validation data for this product please contact:

T: 1 (888) 4PTGLAB (1-888-478-4522) (toll free in USA), or 1(312) 455-8498 (outside USA)

E: proteintech@ptglab.com
W: ptglab.com

This product is exclusively available under Proteintech Group brand and is not available to purchase from any other manufacturer.

Selected Validation Data



Various lysates were subjected to SDS PAGE followed by western blot with 29496-1-AP (COQ10A antibody) at dilution of 1:20000 incubated at room temperature for 1.5 hours.