

For Research Use Only

CRMP1 Polyclonal antibody

Catalog Number: 29497-1-AP



Basic Information

Catalog Number: 29497-1-AP	GenBank Accession Number: NM_001014809	Purification Method: Antigen affinity purification
Size: 150ul , Concentration: 700 ug/ml by Nanodrop;	GeneID (NCBI): 1400	Recommended Dilutions: WB 1:2000-1:16000 IHC 1:500-1:2000
Source: Rabbit	UNIPROT ID: Q14194	
Isotype: IgG	Full Name: collapsin response mediator protein 1	
Immunogen Catalog Number: AG31559	Calculated MW: 62KD	
	Observed MW: 62 kDa	

Applications

Tested Applications: WB, IHC, ELISA	Positive Controls:
Species Specificity: Mouse, Rat	WB : mouse lung tissue, rat lung tissue
Note-IHC: suggested antigen retrieval with TE buffer pH 9.0; (*) Alternatively, antigen retrieval may be performed with citrate buffer pH 6.0	IHC : mouse brain tissue,

Background Information

CRMP1 (Collapsin response mediator protein 1) is also named as DPYSL1, ULIP3, DRP-1 and belongs to the collapsin response mediator protein family, which are a family of five cytoplasmic proteins predominantly expressed in the developing nervous system. CRMP1, the predicted 62-kDa protein and its 75-kDa isoform corresponding to its N-terminal splice variant already described for embryonic, neonatal, and adult brain of the rat are evidenced in the cortex of adult mouse (PMID:15834957). This protein is involved in invasion, and aggressiveness of prolactin pituitary tumors.

Storage

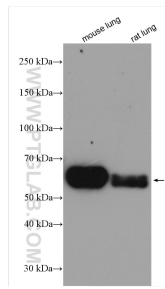
Storage:
Store at -20°C.
Storage Buffer:
PBS with 0.02% sodium azide and 50% glycerol pH 7.3.
Aliquoting is unnecessary for -20°C storage

*** 20ul sizes contain 0.1% BSA

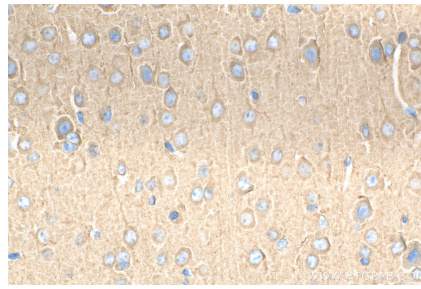
For technical support and original validation data for this product please contact:
T: 1 (888) 4PTGLAB (1-888-478-4522) (toll free in USA), or 1(312) 455-8498 (outside USA)
E: proteintech@ptglab.com
W: ptglab.com

This product is exclusively available under Proteintech Group brand and is not available to purchase from any other manufacturer.

Selected Validation Data



mouse lung tissue were subjected to SDS PAGE followed by western blot with 29497-1-AP (CRMP1 antibody) at dilution of 1:8000 incubated at room temperature for 1.5 hours.



Immunohistochemical analysis of paraffin-embedded mouse brain tissue slide using 29497-1-AP (CRMP1 antibody) at dilution of 1:1000 (under 40x lens). Heat mediated antigen retrieval with Tris-EDTA buffer (pH 9.0).