

For Research Use Only

Phospho-Myosin Light Chain 2 (Thr18/Ser19) Polyclonal antibody, PBS Only

Catalog Number: 29504-1-PBS



Basic Information

Catalog Number: 29504-1-PBS	GenBank Accession Number: BC002648	Purification Method: Antigen affinity purification
Size: 100ug , Concentration: 1 mg/ml by Nanodrop;	GeneID (NCBI): 10398	
Source: Rabbit	UNIPROT ID: P24844	
Isotype: IgG	Full Name: myosin, light chain 9, regulatory	
	Calculated MW: 20 kDa	
	Observed MW: 19-20 kDa	

Applications

Tested Applications:
WB, FC (Intra), Indirect ELISA

Species Specificity:
human

Background Information

Myosin II is an actin-binding protein composed of MHC (myosin heavy chain), MLCs/MRLCs (myosin regulatory light chains) and ELCs (essential light chains). The Myosin Light Chains are divided into basic MLC (MLC I) and regulatory MLC (MLC II or Myosin Regulatory Light Chain, MRLC). MRLC can be classified into two major types: class I MRLC found in muscles (MLC1, MLC2, MLC3, MYL4, MYL5, MYL6, MYL7, etc), and class II MRLCs present in non-muscle cells (such as MYL9, MYL12A, MYL12B). Phosphorylation of myosin II regulatory light chain (MRLC) is important for cell motility and cytokinesis in nonmuscle cells. Phosphorylation of MRLC at Ser19 (1P-MRLC) enhances myosin II activity, which is further enhanced by MRLC diphosphorylation at Thr18/Ser19 (2P-MRLC) in vitro. PMID: 23951055, PMID: 21126233

This antibody can recognize the phosphorylation of three highly homologous Myosin-regulated light chains: MYL12A, MYL12B and MYL9.

Storage

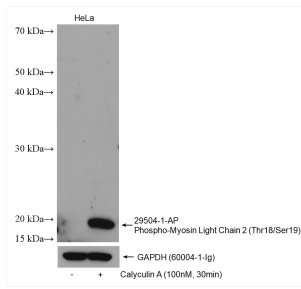
Storage:
Store at -80°C.

Storage Buffer:
PBS only, pH7.3

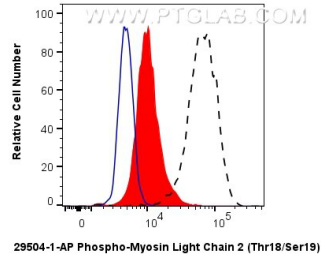
For technical support and original validation data for this product please contact:
T: 1 (888) 4PTGLAB (1-888-478-4522) (toll free in USA), or 1(312) 455-8498 (outside USA) E: proteintech@ptglab.com
W: ptglab.com

This product is exclusively available under Proteintech Group brand and is not available to purchase from any other manufacturer.

Selected Validation Data



Non-treated and Calyculin A treated HeLa cells were subjected to SDS PAGE followed by western blot with 29504-1-AP (Phospho-Myosin Light Chain 2 (Thr18/Ser19) antibody) at dilution of 1:1000 incubated at room temperature for 1.5 hours. The membrane was stripped and re-blotted with GAPDH antibody as loading control. This data was developed using the same antibody clone with 29504-1-PBS in a different storage buffer formulation.



1×10^6 λ phosphatase treated HeLa cells were intracellularly stained with 0.13 μ g Phospho-Myosin Light Chain 2 (Thr18/Ser19) Polyclonal antibody (29504-1-AP) and CoraLite® 488-Conjugated Goat Anti-Rabbit IgG(H+L) (SA00013-2)(red), or 0.13 μ g Rabbit IgG control Polyclonal antibody. Cells were fixed with 4% PFA and permeabilized with 90% MeOH. This data was developed using the same antibody clone with 29504-1-PBS in a different storage buffer formulation.

