

For Research Use Only

MRPL37 Polyclonal antibody

Catalog Number: 29522-1-AP



Basic Information

Catalog Number: 29522-1-AP	GenBank Accession Number: BC000041	Purification Method: Antigen affinity purification
Size: 150ul , Concentration: 600 µg/ml by Nanodrop;	GeneID (NCBI): 51253	Recommended Dilutions: WB 1:1000-1:3000
Source: Rabbit	Full Name: mitochondrial ribosomal protein L37	
Isotype: IgG	Calculated MW: 48 kDa	
Immunogen Catalog Number: AG31452	Observed MW: 48 kDa	

Applications

Tested Applications: WB, ELISA	Positive Controls: WB : HeLa cells, HepG2 cells, K-562 cells, U-251 cells
Species Specificity: Human	

Background Information

Storage

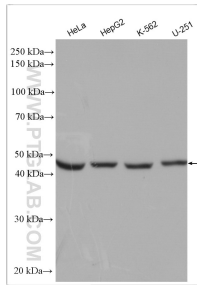
Storage:
Store at -20°C.
Storage Buffer:
PBS with 0.02% sodium azide and 50% glycerol pH 7.3.
Aliquoting is unnecessary for -20°C storage

*** 20ul sizes contain 0.1% BSA

For technical support and original validation data for this product please contact:
T: 1 (888) 4PTGLAB (1-888-478-4522) (toll free in USA), or 1(312) 455-8498 (outside USA) E: proteintech@ptglab.com
W: ptglab.com

This product is exclusively available under Proteintech Group brand and is not available to purchase from any other manufacturer.

Selected Validation Data



Various lysates were subjected to SDS PAGE followed by western blot with 29522-1-AP (MRPL37 antibody) at dilution of 1:1500 incubated at room temperature for 1.5 hours.