

For Research Use Only

IL-1 beta Polyclonal antibody

Catalog Number: 29530-1-AP **3 Publications**



Basic Information

Catalog Number: 29530-1-AP	GenBank Accession Number: NM_031512	Purification Method: Antigen affinity purification
Size: 150ul , Concentration: 700 µg/ml by Nanodrop;	GeneID (NCBI): 24494	Recommended Dilutions: WB 1:1000-1:6000
Source: Rabbit	Full Name: interleukin 1 beta	
Isotype: IgG	Calculated MW: 31 kDa	
	Observed MW: 31 kDa	

Applications

Tested Applications: WB, ELISA	Positive Controls: WB : LPS and Brefeldin A treated RAW 264.7 cells,
Cited Applications: WB	
Species Specificity: mouse, rat	
Cited Species: mouse	

Background Information

Interleukin-1, produced mainly by blood monocytes, mediates the panoply of host reactions collectively known as acute phase response. It is identical to endogenous pyrogen. The multiple biologic activities that define IL1 are properties of a 15- to 18-kD protein that is derived from a 30- to 35-kD precursor. Interleukin 1 β (IL-1 β) is a member of the interleukin 1 cytokine family. It is a pro-inflammatory cytokine against infection, playing an important role in the pathogenesis of cancers. It signals through various adaptor proteins and kinases that lead to activation of numerous downstream targets.

Notable Publications

Author	Pubmed ID	Journal	Application
Shan Wu	37243569	Ann Med	WB
Shuai Xu	37918680	Biochim Biophys Acta Mol Basis Dis	WB
Heng Yang	37808194	Front Pharmacol	WB

Storage

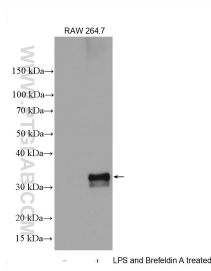
Storage:
Store at -20°C. Stable for one year after shipment.
Storage Buffer:
PBS with 0.02% sodium azide and 50% glycerol pH 7.3.
Aliquoting is unnecessary for -20°C storage

*** 20ul sizes contain 0.1% BSA

For technical support and original validation data for this product please contact:
T: 1 (888) 4PTGLAB (1-888-478-4522) (toll free in USA), or 1(312) 455-8498 (outside USA) E: proteintech@ptglab.com W: ptglab.com

This product is exclusively available under Proteintech Group brand and is not available to purchase from any other manufacturer.

Selected Validation Data



Untreated RAW 264.7 cells, RAW 264.7 cell (treated with 100 ng/ml LPS for 3h, then add 300 ng/ml Brefeldin A for at least 3h) were subjected to SDS PAGE followed by western blot with 29530-1-AP (IL1 beta antibody) at dilution of 1:3000 incubated at room temperature for 1.5 hours.