

For Research Use Only

# MCP-1/CCL2 Polyclonal antibody, PBS Only

Catalog Number: 29547-1-PBS



## Basic Information

Catalog Number:

29547-1-PBS

Size:

100ug, Concentration: 1 mg/ml by Nanodrop;

Source:

Rabbit

Isotype:

IgG

GenBank Accession Number:

BC009716

GeneID (NCBI):

6347

UNIPROT ID:

P13500

Full Name:

chemokine (C-C motif) ligand 2

Calculated MW:

99 aa, 11 kDa

Observed MW:

11 kDa

Purification Method:

Antigen affinity purification

## Applications

Tested Applications:

WB, Indirect ELISA

Species Specificity:

human

## Background Information

MCP-1, (also named as CCL2) is a member of the chemokine family. MCP-1 recruits monocytes, memory T cells, and dendritic cells to the sites of inflammation produced by either tissue injury or infection. MCP-1 has been implicated in the pathogenesis of diseases characterized by monocytic infiltrates, like psoriasis, rheumatoid arthritis and atherosclerosis. It binds to chemokine receptors CCR2 and CCR4. Elevated expression of MCP-1 is associated with severe acute respiratory syndrome coronavirus 2 infection.

## Storage

Storage:

Store at -80°C.

Storage Buffer:

PBS only, pH7.3

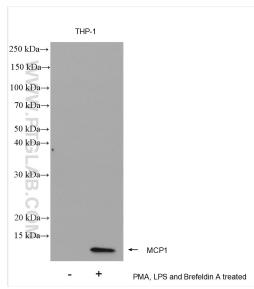
For technical support and original validation data for this product please contact:

T: 1 (888) 4PTGLAB (1-888-478-4522) (toll free in USA), or 1(312) 455-8498 (outside USA)

E: [proteintech@ptglab.com](mailto:proteintech@ptglab.com)  
W: [ptglab.com](http://ptglab.com)

**This product is exclusively available under Proteintech Group brand and is not available to purchase from any other manufacturer.**

## Selected Validation Data



Non-treated, and PMA, LPS and Brefeldin A treated THP-1 cells were subjected to SDS PAGE followed by western blot with 29547-1-AP (MCP1 antibody) at dilution of 1:2000 incubated at room temperature for 1.5 hours. This data was developed using the same antibody clone with 29547-1-PBS in a different storage buffer formulation.