

For Research Use Only

# Phospho-PKC Delta (Ser359) Polyclonal antibody



Catalog Number: 29562-1-AP

1 Publications

## Basic Information

<b>Catalog Number:</b> 29562-1-AP	<b>GenBank Accession Number:</b> BC043350	<b>Purification Method:</b> Antigen affinity purification
<b>Size:</b> 100ul , Concentration: 300 µg/ml by Nanodrop;	<b>GeneID (NCBI):</b> 5580	<b>Recommended Dilutions:</b> WB 1:500-1:1000 IF 1:50-1:500
<b>Source:</b> Rabbit	<b>Full Name:</b> protein kinase C, delta	
<b>Isotype:</b> IgG	<b>Calculated MW:</b> 78 kDa	
	<b>Observed MW:</b> 70 kDa	

## Applications

<b>Tested Applications:</b> IF, WB, ELISA	<b>Positive Controls:</b> WB : λ phosphatase treated Jurkat cells, IF : λ phosphatase treated A431 cells,
<b>Cited Applications:</b> WB	
<b>Species Specificity:</b> Human	
<b>Cited Species:</b> rat, mouse	

## Background Information

Protein kinase C (PKC) was initially identified and characterized as a protein hydrolysis-activated kinase called protein kinase M. It has been established that PKC is a family of at least 12 serine/threonine kinases that is divided into three subfamilies: The classical PKCs ( $\alpha$ ,  $\beta$ 1,  $\beta$ 2, and  $\gamma$ ), which are activated by diacylglycerol (DAG) and calcium; the novel PKCs ( $\delta$ ,  $\epsilon$ ,  $\eta$ , and  $\theta$ ) which are activated by DAG; and the atypical PKCs ( $\zeta$  and  $\lambda$ /i), which respond to neither DAG nor calcium. PKC $\delta$ , unlike other members of the PKC family, is unique in its regulation by tyrosine phosphorylation on multiple sites that determine activation, localization, and substrate specificity. PKC $\delta$  is activated by inflammatory mediators involved in the inflammatory response including lipopolysaccharide (LPS), tumor necrosis factor (TNF) and interleukin-1 (IL-1). PKC $\delta$  activation requires multi-phosphorylation steps which triggers translocation from the cell cytosol to different subcellular compartments. (PMID: 30095599, PMID: 31323909, PMID: 30917487)

## Notable Publications

Author	Pubmed ID	Journal	Application
Qian Jiang	37444485	Cancers (Basel)	WB

## Storage

**Storage:**  
Store at -20°C. Stable for one year after shipment.  
**Storage Buffer:**  
PBS with 0.02% sodium azide and 50% glycerol pH 7.3.  
Aliquoting is unnecessary for -20°C storage

\*\*\* 20ul sizes contain 0.1% BSA

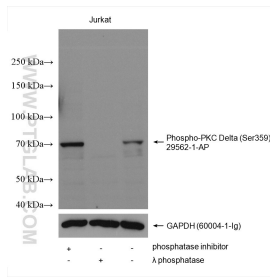
For technical support and original validation data for this product please contact:

T: 1 (888) 4PTGLAB (1-888-478-4522) (toll free in USA), or 1(312) 455-8498 (outside USA)

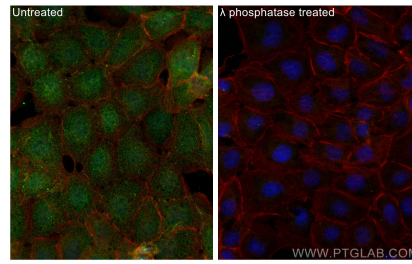
E: proteintech@ptglab.com  
W: ptglab.com

This product is exclusively available under Proteintech Group brand and is not available to purchase from any other manufacturer.

## Selected Validation Data



Non-treated Jurkat, phosphatase inhibitor treated and  $\lambda$  phosphatase treated Jurkat cells were subjected to SDS PAGE followed by western blot with 29562-1-AP (Phospho-PKC Delta (Ser359) antibody) at dilution of 1:600 incubated at room temperature for 1.5 hours. The membrane was stripped and re-blotted with GAPDH antibody as loading control.



Immunofluorescent analysis of (4% PFA) fixed  $\lambda$  phosphatase treated A431 cells using Phospho-PKC Delta (Ser359) antibody (29562-1-AP) at dilution of 1:200 and CoraLite® 488-Conjugated AffiniPure Goat Anti-Rabbit IgG(H+L), CL594-Phalloidin (red).