

For Research Use Only

Phospho-PKC Delta (Thr507) Polyclonal antibody, PBS Only

Catalog Number: 29564-1-PBS



Basic Information

Catalog Number:

29564-1-PBS

Size:

100ug, Concentration: 1 mg/ml by Nanodrop;

Source:

Rabbit

Isotype:

IgG

GenBank Accession Number:

BC043350

GeneID (NCBI):

5580

UNIPROT ID:

Q05655

Full Name:

protein kinase C, delta

Calculated MW:

78 kDa

Observed MW:

70 kDa

Purification Method:

Antigen affinity purification

Applications

Tested Applications:

WB, Indirect ELISA

Species Specificity:

human

Background Information

PKC Delta (PRKCD) is a member of the PKC family, a phospholipid-dependent family of serine/threonine kinases, and is present in human neutrophils. Novel PKCs (PRKCD, PRKCE, PRKCH and PRKCQ) are calcium-insensitive, but activated by diacylglycerol (DAG) and phosphatidylserine. Three specific sites; Thr-507 (activation loop of the kinase domain), Ser-645 (turn motif) and Ser-664 (hydrophobic region), need to be phosphorylated for its full activation. This antibody is equivalent to Thr505 in mice.

Storage

Storage:

Store at -80°C.

Storage Buffer:

PBS Only

For technical support and original validation data for this product please contact:

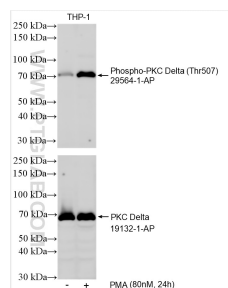
T: 1 (888) 4PTGLAB (1-888-478-4522) (toll free in USA), or 1(312) 455-8498 (outside USA)

E: proteintech@ptglab.com

W: ptglab.com

This product is exclusively available under Proteintech Group brand and is not available to purchase from any other manufacturer.

Selected Validation Data



Non-treated and PMA treated THP-1 cells were subjected to SDS PAGE followed by western blot with 29564-1-AP (Phospho-PKC Delta (Thr507) antibody) at dilution of 1:500 incubated at room temperature for 1.5 hours. The membrane was stripped and re-blotted with PKC Delta antibody (19132-1-AP) subsequently. This data was developed using the same antibody clone with 29564-1-PBS in a different storage buffer formulation.