

For Research Use Only

PLCG2 Polyclonal antibody

Catalog Number: 29567-1-AP



Basic Information

Catalog Number: 29567-1-AP	GenBank Accession Number: BC007565	Purification Method: Antigen affinity purification
Size: 150ul , Concentration: 1200 µg/ml by Nanodrop;	GeneID (NCBI): 5336	Recommended Dilutions: WB 1:500-1:2000
Source: Rabbit	Full Name: phospholipase C, gamma 2 (phosphatidylinositol-specific)	
Isotype: IgG	Calculated MW: 148 kDa	
	Observed MW: 148 kDa	

Applications

Tested Applications: WB, ELISA	Positive Controls: WB : Daudi cells, Ramos cells
Species Specificity: Human	

Background Information

Phospholipase C-gamma2 (PLCG2) is a transmembrane signaling enzyme that catalyzes the conversion of 1-phosphatidyl-1D-myo-inositol 4,5-bisphosphate to 1D-myo-inositol 1,4,5-trisphosphate (IP3) and diacylglycerol (DAG) using calcium as a cofactor. IP3 and DAG are second messenger molecules important for transmitting signals from growth factor receptors and immune system receptors across the cell membrane. Mutations in this gene have been found in autoinflammation, antibody deficiency, and immune dysregulation syndrome and familial cold autoinflammatory syndrome 3.

Storage

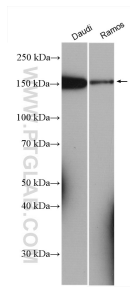
Storage:
Store at -20°C.
Storage Buffer:
PBS with 0.02% sodium azide and 50% glycerol pH 7.3.
Aliquoting is unnecessary for -20°C storage

*** 20ul sizes contain 0.1% BSA

For technical support and original validation data for this product please contact:
T: 1 (888) 4PTGLAB (1-888-478-4522) (toll free in USA), or 1(312) 455-8498 (outside USA) E: proteintech@ptglab.com W: ptglab.com

This product is exclusively available under Proteintech Group brand and is not available to purchase from any other manufacturer.

Selected Validation Data



Various lysates were subjected to SDS PAGE followed by western blot with 29567-1-AP (PLCG2 antibody) at dilution of 1:1000 incubated at room temperature for 1.5 hours.